

\$665,000 - 4 Edgefield Way, St. Albert

MLS® #E4413406

\$665,000

3 Bedroom, 3.00 Bathroom, 2,157 sqft
Single Family on 0.00 Acres

Erin Ridge North, St. Albert, AB

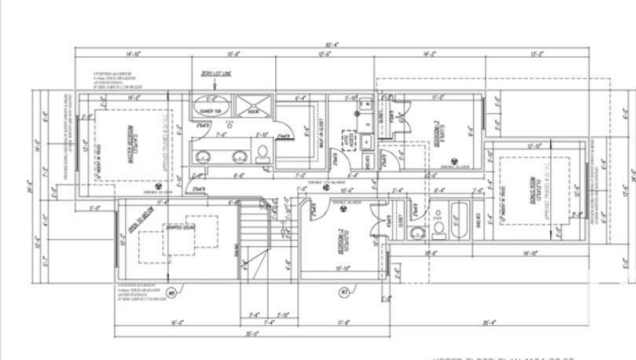
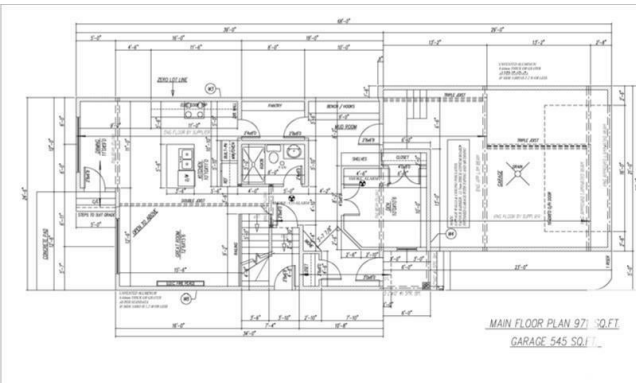
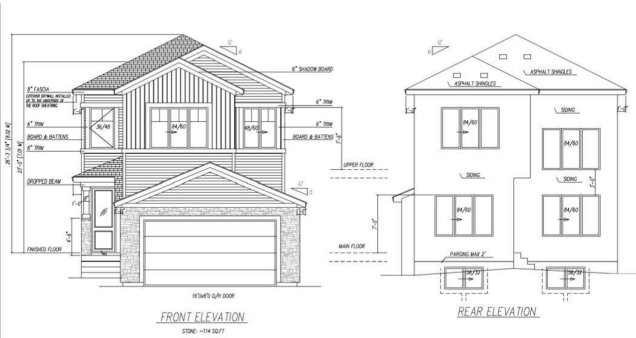
Pre-Sale opportunity now available for this gorgeous new construction in Erin Ridge North St. Albert! This home features a main floor den with a full bath, mudroom with bench and hooks, walk-through pantry, beautiful kitchen, dining room, and an open to above living room with HUGE windows. On the second level you have 3 bedrooms with 2 full baths, bonus room with an indented ceiling, and laundry room with a sink. Also includes a side entrance. Other options available. Photos are of a different home.

Built in 2024

Essential Information

MLS® #	E4413406
Price	\$665,000
Bedrooms	3
Bathrooms	3.00
Full Baths	3
Square Footage	2,157
Acres	0.00
Year Built	2024
Type	Single Family
Sub-Type	Detached Single Family
Style	2 Storey
Status	Active

Community Information



Address	4 Edgefield Way
Area	St. Albert
Subdivision	Erin Ridge North
City	St. Albert
County	ALBERTA
Province	AB
Postal Code	T8N 8A1

Amenities

Amenities	See Remarks
Parking	Double Garage Attached

Interior

Interior Features	ensuite bathroom
Appliances	See Remarks
Heating	Forced Air-1, Natural Gas
Fireplace	Yes
Fireplaces	Insert
Stories	2
Has Basement	Yes
Basement	Full, Unfinished

Exterior

Exterior	Wood, Stone, Vinyl
Exterior Features	See Remarks
Roof	Asphalt Shingles
Construction	Wood, Stone, Vinyl
Foundation	Concrete Perimeter

Additional Information

Date Listed	November 12th, 2024
Days on Market	170
Zoning	Zone 24

DATA IS DEEMED RELIABLE BUT IS NOT GUARANTEED ACCURATE BY THE REALTORS® ASSOCIATION OF EDMONTON. COPYRIGHT 2025 BY THE REALTORS® ASSOCIATION OF EDMONTON. ALL RIGHTS RESERVED. Trademarks are owned or controlled by the Canadian Real Estate Association (CREA) and identify real estate professionals who are members of CREA (REALTOR®, REALTORS®) and/or the quality of services they provide (MLS®, Multiple Listing Service®)

Listing information last updated on May 1st, 2025 at 8:32am MDT