

\$739,900 - 89 Newbury Circle, Sherwood Park

MLS® #E4423846

\$739,900

3 Bedroom, 2.50 Bathroom, 2,177 sqft

Single Family on 0.00 Acres

Salisbury Village, Sherwood Park, AB

Welcome to this stunning 2,177 Sq Ft 2-storey home located in the desirable community of Salisbury Village! Offering 3 spacious bedrooms, 2.5 bathrooms, and separate side entrance, this home is designed for luxury living and modern convenience. Step into the open-concept main floor, where the stylish kitchen includes a walk-through pantry with double-sided shelving, providing ample storage and direct access from the garage. The large great room and dining area offer the perfect space for entertaining. Upstairs, the master suite is a true retreat, featuring a walk-in closet and a spa-like 5-piece ensuite with a water closet, double sinks, and a soaker tub. The 2nd floor also hosts a convenient laundry room with extra storage, making daily tasks a breeze. Also, don't forget to kick back and relax in your massive central bonus room. This home is a perfect blend of sophistication and functionality, offering the space and features your family needs to thrive! Immediate possession!

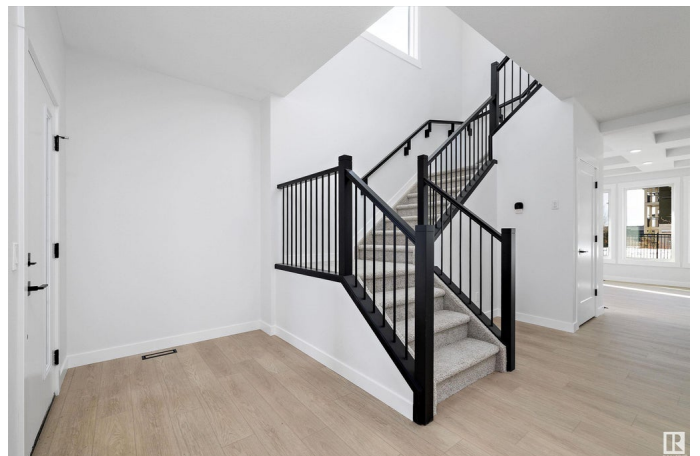
Built in 2024

Essential Information

MLS® # E4423846

Price \$739,900

Bedrooms 3



Bathrooms	2.50
Full Baths	2
Half Baths	1
Square Footage	2,177
Acres	0.00
Year Built	2024
Type	Single Family
Sub-Type	Detached Single Family
Style	2 Storey
Status	Active

Community Information

Address	89 Newbury Circle
Area	Sherwood Park
Subdivision	Salisbury Village
City	Sherwood Park
County	ALBERTA
Province	AB
Postal Code	T8B 0E9

Amenities

Amenities	See Remarks
Parking	Double Garage Attached

Interior

Interior Features	ensuite bathroom
Appliances	Dishwasher-Built-In, Hood Fan, Oven-Built-In, Oven-Microwave, Refrigerator, Stove-Electric
Heating	Forced Air-1, Natural Gas
Stories	2
Has Basement	Yes
Basement	Full, Unfinished

Exterior

Exterior	Concrete, Vinyl
Exterior Features	Public Transportation, Schools, Shopping Nearby
Roof	Asphalt Shingles
Construction	Concrete, Vinyl
Foundation	Concrete Perimeter

Additional Information

Date Listed	March 4th, 2025
Days on Market	58
Zoning	Zone 25

DATA IS DEEMED RELIABLE BUT IS NOT GUARANTEED ACCURATE BY THE REALTORS® ASSOCIATION OF EDMONTON. COPYRIGHT 2025 BY THE REALTORS® ASSOCIATION OF EDMONTON. ALL RIGHTS RESERVED.Trademarks are owned or controlled by the Canadian Real Estate Association (CREA) and identify real estate professionals who are members of CREA (REALTOR®, REALTORS®) and/or the quality of services they provide (MLS®, Multiple Listing Service®)

Listing information last updated on May 1st, 2025 at 5:17pm MDT