

\$414,000 - 1855 28 St, Edmonton

MLS® #E4425527

\$414,000

3 Bedroom, 2.50 Bathroom, 1,412 sqft

Single Family on 0.00 Acres

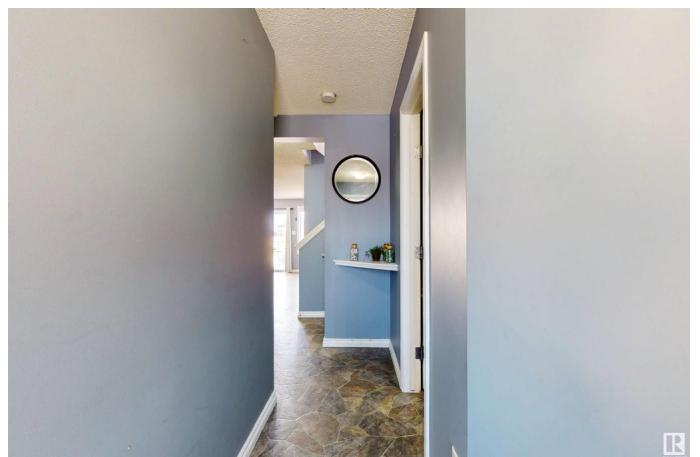
Laurel, Edmonton, AB

Beautiful Half Duplex in Laurel. This stunning home offers 3 spacious bedrooms, 2.5 bathrooms, a bonus room, and a single attached garage, making it perfect for families. The main floor features a bright living room with a cozy gas fireplace, a stylish island kitchen with and an adjacent dining area that opens to the backyard. A convenient half bath completes this level. Upstairs, you'll find three generously sized bedrooms, a full bathroom, and a versatile bonus room. The massive primary suite boasts a 4-piece ensuite and a walk-in closet. Step outside to a fully fenced and landscaped backyard with a huge raised composite deck, perfect for outdoor gatherings. This home is backing onto a green space, offering privacy and scenic views. Located in a prime area, it is close to all essential amenities, including schools, grocery stores, Fresco, Browns Social house, The Meadows Rec Centre, bus services, and quick access to Anthony Henday.

Built in 2011

Essential Information

| | |
|-----------|-----------|
| MLS® # | E4425527 |
| Price | \$414,000 |
| Bedrooms | 3 |
| Bathrooms | 2.50 |



| | |
|----------------|---------------|
| Full Baths | 2 |
| Half Baths | 1 |
| Square Footage | 1,412 |
| Acres | 0.00 |
| Year Built | 2011 |
| Type | Single Family |
| Sub-Type | Half Duplex |
| Style | 2 Storey |
| Status | Active |

Community Information

| | |
|-------------|------------|
| Address | 1855 28 St |
| Area | Edmonton |
| Subdivision | Laurel |
| City | Edmonton |
| County | ALBERTA |
| Province | AB |
| Postal Code | T6T 0N5 |

Amenities

| | |
|-----------|---------------------------------------|
| Amenities | Deck, No Animal Home, No Smoking Home |
| Parking | Single Garage Attached |

Interior

| | |
|-------------------|--|
| Interior Features | ensuite bathroom |
| Appliances | Dishwasher-Built-In, Dryer, Oven-Microwave, Refrigerator, Stove-Electric, Washer, Window Coverings |
| Heating | Forced Air-1, Natural Gas |
| Fireplace | Yes |
| Fireplaces | Glass Door |
| Stories | 2 |
| Has Basement | Yes |
| Basement | Full, Unfinished |

Exterior

| | |
|-------------------|---|
| Exterior | Wood, Stone, Vinyl |
| Exterior Features | Playground Nearby, Public Transportation, Shopping Nearby |
| Roof | Asphalt Shingles |
| Construction | Wood, Stone, Vinyl |

Foundation Concrete Perimeter

School Information

Elementary Svend Hansen School
Middle T D Baker School
High W P Wagner School

Additional Information

Date Listed March 13th, 2025
Days on Market 52
Zoning Zone 30

DATA IS DEEMED RELIABLE BUT IS NOT GUARANTEED ACCURATE BY THE REALTORS® ASSOCIATION OF EDMONTON. COPYRIGHT 2025 BY THE REALTORS® ASSOCIATION OF EDMONTON. ALL RIGHTS RESERVED.Trademarks are owned or controlled by the Canadian Real Estate Association (CREA) and identify real estate professionals who are members of CREA (REALTOR®, REALTORS®) and/or the quality of services they provide (MLS®, Multiple Listing Service®)
Listing information last updated on May 3rd, 2025 at 11:32pm MDT