

## \$624,900 - 67 Redspur Drive, St. Albert

MLS® #E4426528

**\$624,900**

3 Bedroom, 2.50 Bathroom, 2,225 sqft

Single Family on 0.00 Acres

Riverside (St. Albert), St. Albert, AB

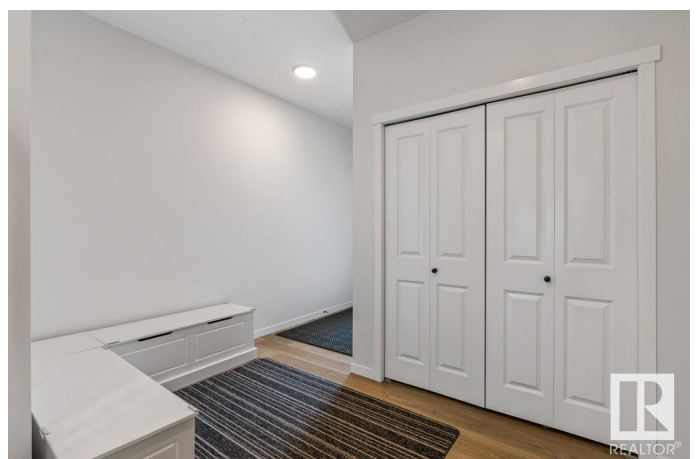
BETTER THAN NEW – 2224 sq ft 2-story Coventry home with thoughtful design and premium features. The main floor boasts 9' ceilings and an open-concept layout. The stunning kitchen offers upgraded cabinetry, quartz countertops, a ceramic tile backsplash, stainless steel appliances, and a spacious pantry. The Great Room, with a sleek electric fireplace, flows seamlessly into the dining nook at the rear of the home—perfect for entertaining. A mudroom and half bath are tucked beside the garage entrance for added convenience. Upstairs, an elegant iron spindle railing leads to a luxurious primary bedroom featuring a 5-piece ensuite with dual sinks, a free-standing soaker tub, and a walk-in closet. Two additional bedrooms, a main bathroom, a versatile bonus room, and an upstairs laundry room provide comfort and practicality. Enjoy the fully fenced backyard with a spacious deck and professional landscaping. Additional features include a double attached garage, 9' basement ceiling, and all window coverings included

Built in 2021

### Essential Information

MLS® # E4426528

Price \$624,900



Bedrooms	3
Bathrooms	2.50
Full Baths	2
Half Baths	1
Square Footage	2,225
Acres	0.00
Year Built	2021
Type	Single Family
Sub-Type	Detached Single Family
Style	2 Storey
Status	Active

### Community Information

Address	67 Redspur Drive
Area	St. Albert
Subdivision	Riverside (St. Albert)
City	St. Albert
County	ALBERTA
Province	AB
Postal Code	T8N 7Y6

### Amenities

Amenities	Ceiling 9 ft., Deck, See Remarks, 9 ft. Basement Ceiling
Parking	Double Garage Attached

### Interior

Interior Features	ensuite bathroom
Appliances	Dishwasher-Built-In, Dryer, Garage Control, Garage Opener, Microwave Hood Fan, Refrigerator, Stove-Electric, Washer, Window Coverings
Heating	Forced Air-1, Natural Gas
Fireplace	Yes
Fireplaces	Mantel
Stories	2
Has Basement	Yes
Basement	Full, Unfinished

### Exterior

Exterior	Wood, Vinyl
Exterior Features	Fenced, Landscaped, Playground Nearby, Shopping Nearby

Roof	Asphalt Shingles
Construction	Wood, Vinyl
Foundation	Concrete Perimeter

**Additional Information**

Date Listed	March 20th, 2025
Days on Market	43
Zoning	Zone 24

DATA IS DEEMED RELIABLE BUT IS NOT GUARANTEED ACCURATE BY THE REALTORS® ASSOCIATION OF EDMONTON. COPYRIGHT 2025 BY THE REALTORS® ASSOCIATION OF EDMONTON. ALL RIGHTS RESERVED.Trademarks are owned or controlled by the Canadian Real Estate Association (CREA) and identify real estate professionals who are members of CREA (REALTOR®, REALTORS®) and/or the quality of services they provide (MLS®, Multiple Listing Service®)

Listing information last updated on May 2nd, 2025 at 3:17am MDT