

\$775,000 - 5805 Pelerin Crescent, Beaumont

MLS® #E4427409

\$775,000

7 Bedroom, 5.00 Bathroom, 2,597 sqft

Single Family on 0.00 Acres

Place Chaleureuse, Beaumont, AB

Welcome to your dream home in the heart of Beaumont! This stunning, two-storey residence offers an impressive 2,413 sq. ft. of stylish and desirable living space, seamlessly blending contemporary design with functional elegance. With SEVEN spacious bedrooms and 5 well-appointed bathrooms, this home is perfect for families seeking comfort and sophistication. Step inside to discover the bright and open concept main floor featuring a versatile bedroom with an full bathroom – ideal for guests or multi-generational living. The chef’s kitchen is complemented by an additional SPICE KITCHEN. Upstairs, you'll find the luxurious bonus room and master complete with a 5-piece ensuite, providing a serene retreat for relaxation. THREE additional bedrooms with a second master, ensure ample space for family members. One of the home’s standout features is the fully finished, 2-bedroom LEGAL SUITE offering endless possibilities as an income! DO NOT MISS OUT!!

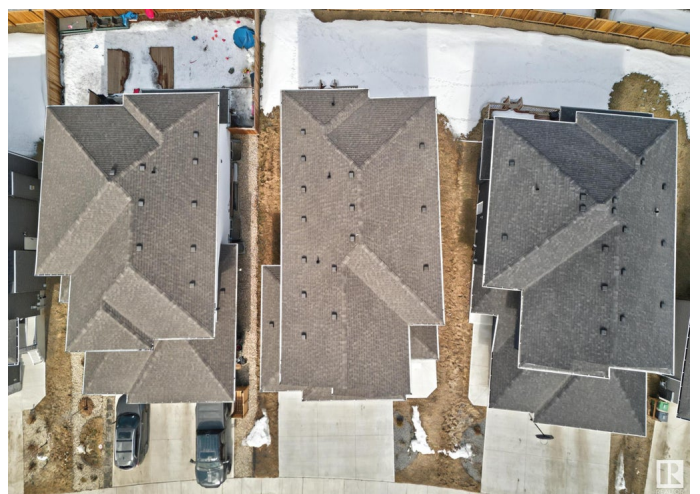
Built in 2022

Essential Information

MLS® # E4427409

Price \$775,000

Bedrooms 7



Bathrooms	5.00
Full Baths	5
Square Footage	2,597
Acres	0.00
Year Built	2022
Type	Single Family
Sub-Type	Detached Single Family
Style	2 Storey
Status	Active

Community Information

Address	5805 Pelerin Crescent
Area	Beaumont
Subdivision	Place Chaleureuse
City	Beaumont
County	ALBERTA
Province	AB
Postal Code	T4X 2X8

Amenities

Amenities	See Remarks
Parking	Triple Garage Attached

Interior

Interior Features	ensuite bathroom
Appliances	Dishwasher - Energy Star, Dishwasher-Built-In, Dryer, Garage Control, Oven-Built-In, Oven-Microwave, Refrigerator, Stacked Washer/Dryer, Stove-Countertop Electric, Stove-Electric, Washer, Window Coverings, Refrigerators-Two, Stoves-Two, TV Wall Mount
Heating	Forced Air-1, Natural Gas
Fireplace	Yes
Fireplaces	Mantel
Stories	2
Has Suite	Yes
Has Basement	Yes
Basement	Full, Finished

Exterior

Exterior	Wood, Vinyl
----------	-------------

Exterior Features	Flat Site, No Back Lane, Playground Nearby, Schools
Roof	Asphalt Shingles
Construction	Wood, Vinyl
Foundation	Concrete Perimeter

Additional Information

Date Listed	March 25th, 2025
Days on Market	83
Zoning	Zone 82

DATA IS DEEMED RELIABLE BUT IS NOT GUARANTEED ACCURATE BY THE REALTORS® ASSOCIATION OF EDMONTON. COPYRIGHT 2025 BY THE REALTORS® ASSOCIATION OF EDMONTON. ALL RIGHTS RESERVED.Trademarks are owned or controlled by the Canadian Real Estate Association (CREA) and identify real estate professionals who are members of CREA (REALTOR®, REALTORS®) and/or the quality of services they provide (MLS®, Multiple Listing Service®)

Listing information last updated on June 16th, 2025 at 9:17pm MDT