

Courtesy Of Taylor J Hack Of RE/MAX River City

\$285,000 - 511 10303 111 Street, Edmonton

MLS® #E4432413

\$285,000

2 Bedroom, 2.00 Bathroom, 1,165 sqft
Condo / Townhouse on 0.00 Acres

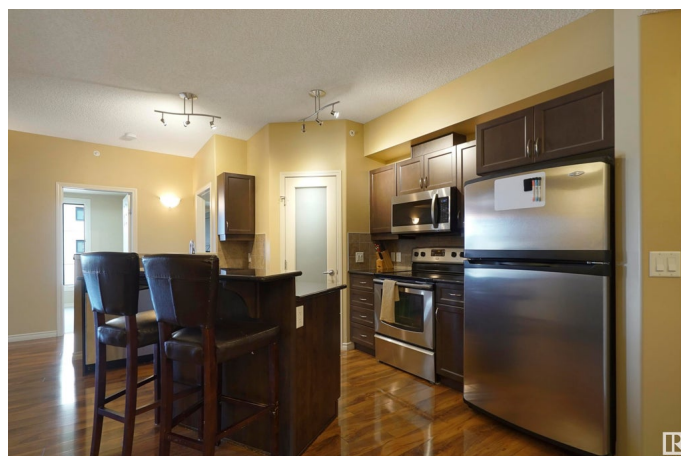
Downtown (Edmonton), Edmonton, AB

Live stylishly in the sweet spot—steps from MacEwan University, nearby the Ice District, & all that Downtown Edmonton has to offer. Visit the REALTOR®'s website for more details. Alta Vista South is a concrete high-rise condo that blends modern design with exceptional convenience. This uncommonly large 2 bed, 2 bath layout offers a smart split-bedroom floorplan—perfect for professional couples or room-mates, making an efficient, segmented use of space. The contemporary finishes give a relaxed vibe as the kitchen flows into a generous living area, ideal for entertaining or winding down. In-suite laundry, a balcony with a natural gas hookup, & underground parking score this condo full points for low maintenance lifestyle. This Adult Living (18+) building is professionally managed, has 15 visitor parking stalls, & an on-site supervisor that's security oriented. Whether you're grabbing brunch, catching a game at Rogers Place, or biking to the River Valley trails, this move-in-ready spot is sweet.

Built in 2008

Essential Information

MLS® #	E4432413
Price	\$285,000
Bedrooms	2



Bathrooms	2.00
Full Baths	2
Square Footage	1,165
Acres	0.00
Year Built	2008
Type	Condo / Townhouse
Sub-Type	Apartment High Rise
Style	Single Level Apartment
Status	Active

Community Information

Address	511 10303 111 Street
Area	Edmonton
Subdivision	Downtown (Edmonton)
City	Edmonton
County	ALBERTA
Province	AB
Postal Code	T5K 0C6

Amenities

Amenities	Air Conditioner, No Animal Home, Parking-Visitor, Patio, Security Door, Vinyl Windows, Natural Gas BBQ Hookup
Parking Spaces	1
Parking	Heated, Parkade, Underground

Interior

Interior Features	ensuite bathroom
Appliances	Air Conditioning-Central, Dishwasher-Built-In, Dryer, Microwave Hood Fan, Refrigerator, Stove-Electric, Washer, Window Coverings
Heating	Heat Pump, Natural Gas
Fireplace	Yes
Fireplaces	Corner, Tile Surround
# of Stories	12
Stories	1
Has Basement	Yes
Basement	None, No Basement

Exterior

Exterior	Concrete, Brick, Stucco
----------	-------------------------

Exterior Features	Playground Nearby, Public Transportation, Schools, Shopping Nearby, View City
Roof	Tar & Gravel
Construction	Concrete, Brick, Stucco
Foundation	Concrete Perimeter

School Information

Elementary	W&hkw&ant&win School
Middle	Westminster School
High	Victoria School

Additional Information

Date Listed	April 24th, 2025
Days on Market	120
Zoning	Zone 12
Condo Fee	\$671

DATA IS DEEMED RELIABLE BUT IS NOT GUARANTEED ACCURATE BY THE REALTORS® ASSOCIATION OF EDMONTON. COPYRIGHT 2025 BY THE REALTORS® ASSOCIATION OF EDMONTON. ALL RIGHTS RESERVED. Trademarks are owned or controlled by the Canadian Real Estate Association (CREA) and identify real estate professionals who are members of CREA (REALTOR®, REALTORS®) and/or the quality of services they provide (MLS®, Multiple Listing Service®)

Listing information last updated on August 22nd, 2025 at 5:17am MDT