

## \$444,800 - 15732 107a Avenue, Edmonton

MLS® #E4432653

**\$444,800**

3 Bedroom, 2.00 Bathroom, 1,011 sqft

Single Family on 0.00 Acres

Mayfield, Edmonton, AB

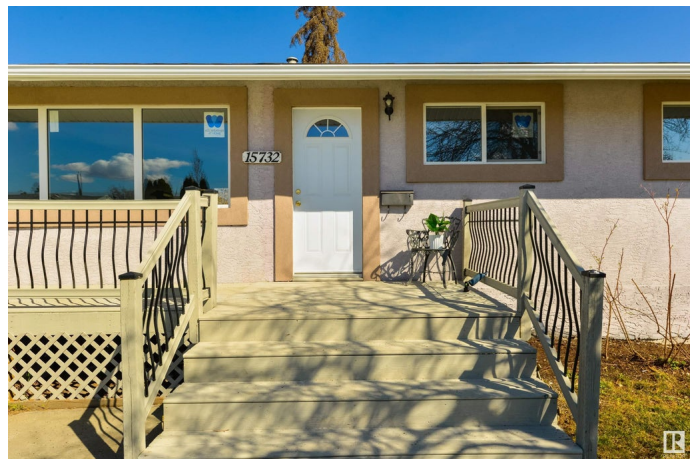
Welcome this professionally renovated 3 bed 2 bath bungalow. Located on a Quiet street in the beautiful community of Mayfield. this lovely property boast a modern layout with a spacious family room offering laminate flooring large picture window overlooking the sunny south facing front Deck. the newly installed kitchen offers tons of cabinets with a large pantry and brand new SS APPLIANCES. Main floor patio doors of the kitchen leads to the large back Deck. The primary bedroom boasts a large walk -in closet. second bedroom is of an ideal size. The basement has a newly renovated large family room offering laminate floors , third spacious bedroom, and a newer three pcs bath. large storage area in the nicely laid out utility room. Oversized double garage and a cement parking pad ideal for an RV storage. upgrades include newer house shingles facia ,Doors ,Windows, high end laminate throughout house & basement , brand new Stainless steel ,new 50 gallon hot water tank, upgraded power panel and much more.

Built in 1958

### Essential Information

MLS® # E4432653

Price \$444,800



Bedrooms	3
Bathrooms	2.00
Full Baths	2
Square Footage	1,011
Acres	0.00
Year Built	1958
Type	Single Family
Sub-Type	Detached Single Family
Style	Bungalow
Status	Active

### **Community Information**

Address	15732 107a Avenue
Area	Edmonton
Subdivision	Mayfield
City	Edmonton
County	ALBERTA
Province	AB
Postal Code	T5P 0Z1

### **Amenities**

Amenities	Deck, Detectors Smoke, See Remarks
Parking	Double Garage Detached, Over Sized, Parking Pad Cement/Paved

### **Interior**

Appliances	Dishwasher-Built-In, Dryer, Refrigerator, Stove-Electric, Washer
Heating	Forced Air-1, Natural Gas
Stories	2
Has Basement	Yes
Basement	Full, Finished

### **Exterior**

Exterior	Wood, Stucco
Exterior Features	Back Lane, Landscaped, Picnic Area, Public Swimming Pool, Public Transportation, Schools, Shopping Nearby, See Remarks
Roof	Asphalt Shingles
Construction	Wood, Stucco
Foundation	Concrete Perimeter

### **School Information**

Elementary	MAYFILED ,BRITANIA
Middle	MAYFIELD JUNIOR HIGH
High	ROSS SHEPPARD

### **Additional Information**

Date Listed	April 22nd, 2025
-------------	------------------

Days on Market	11
----------------	----

Zoning	Zone 21
--------	---------

DATA IS DEEMED RELIABLE BUT IS NOT GUARANTEED ACCURATE BY THE REALTORS® ASSOCIATION OF EDMONTON. COPYRIGHT 2025 BY THE REALTORS® ASSOCIATION OF EDMONTON. ALL RIGHTS RESERVED.Trademarks are owned or controlled by the Canadian Real Estate Association (CREA) and identify real estate professionals who are members of CREA (REALTOR®, REALTORS®) and/or the quality of services they provide (MLS®, Multiple Listing Service®)

Listing information last updated on May 3rd, 2025 at 4:17pm MDT