

## \$239,900 - 160 Primrose Gardens Gardens, Edmonton

MLS® #E4432694

**\$239,900**

3 Bedroom, 1.50 Bathroom, 1,091 sqft

Condo / Townhouse on 0.00 Acres

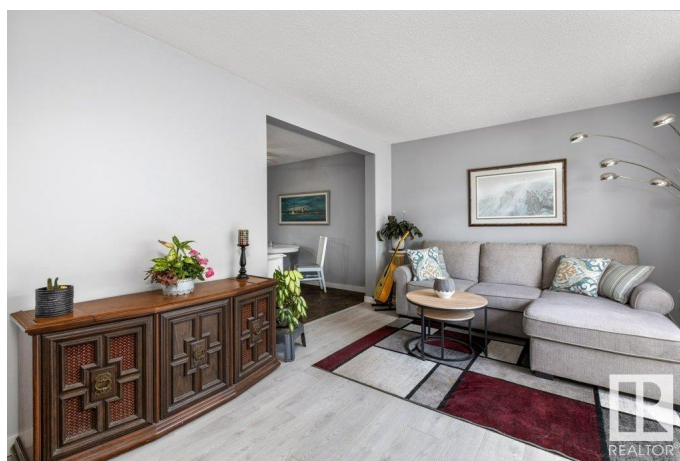
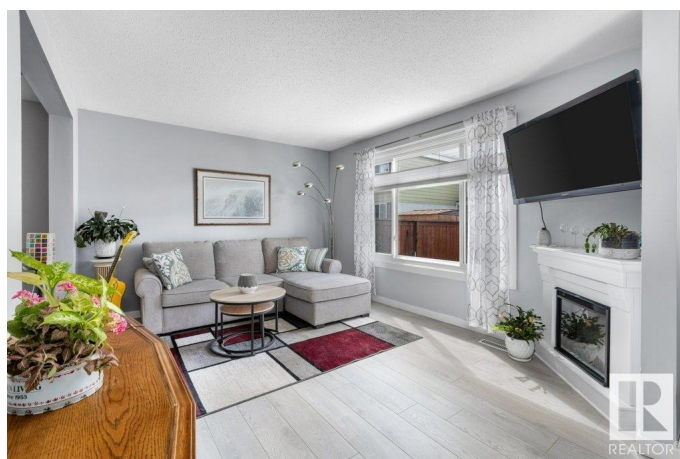
Aldergrove, Edmonton, AB

Welcome to Primrose Gardens! Renovated 3 Bedroom Home â€” Under \$240K! This beautifully updated townhouse offers incredible value for first-time buyers, investors, or anyone looking to break into the market. The bright and welcoming main floor features newer flooring and paint, a white kitchen, dedicated dining area, and a renovated 2-piece powder room. Large windows flood the space with natural light, and the back door leads to a private, sunny yardâ€”perfect for pet owners or summer relaxing. Upstairs youâ€™ll find three spacious bedrooms and a 4-piece bathroom. The fully finished basement offers a large rec room, perfect for the cozy nights in, ample storage, and laundry. Located in a convenient West End community, you're just minutes from public transportation, schools, shopping, Misericordia Hospital, West Edmonton Mall, and the upcoming LRT line. Donâ€™t miss this move in ready affordable gem!

Built in 1973

### Essential Information

MLS® #	E4432694
Price	\$239,900
Bedrooms	3
Bathrooms	1.50



Full Baths	1
Half Baths	1
Square Footage	1,091
Acres	0.00
Year Built	1973
Type	Condo / Townhouse
Sub-Type	Townhouse
Style	2 Storey
Status	Active

### Community Information

Address	160 Primrose Gardens Gardens
Area	Edmonton
Subdivision	Aldergrove
City	Edmonton
County	ALBERTA
Province	AB
Postal Code	T5T 0R1

### Amenities

Amenities	Parking-Visitor
Parking	Stall

### Interior

Appliances	Dishwasher-Built-In, Dryer, Hood Fan, Refrigerator, Stove-Electric, Washer
Heating	Forced Air-1, Natural Gas
Stories	3
Has Basement	Yes
Basement	Full, Finished

### Exterior

Exterior	Wood, Metal, Stucco
Exterior Features	Fenced, Landscaped, Playground Nearby, Public Transportation, Schools, Shopping Nearby
Roof	Asphalt Shingles
Construction	Wood, Metal, Stucco
Foundation	Concrete Perimeter

### School Information

Elementary	Aldergrove
Middle	Parkview
High	Jasper Place

**Additional Information**

Date Listed	April 25th, 2025
Days on Market	6
Zoning	Zone 20
Condo Fee	\$335

DATA IS DEEMED RELIABLE BUT IS NOT GUARANTEED ACCURATE BY THE REALTORS® ASSOCIATION OF EDMONTON. COPYRIGHT 2025 BY THE REALTORS® ASSOCIATION OF EDMONTON. ALL RIGHTS RESERVED.Trademarks are owned or controlled by the Canadian Real Estate Association (CREA) and identify real estate professionals who are members of CREA (REALTOR®, REALTORS®) and/or the quality of services they provide (MLS®, Multiple Listing Service®)

Listing information last updated on May 1st, 2025 at 1:02pm MDT