

\$525,000 - 12 Springbrook Wynd, Spruce Grove

MLS® #E4433044

\$525,000

3 Bedroom, 2.50 Bathroom, 1,813 sqft

Single Family on 0.00 Acres

Spruce Ridge, Spruce Grove, AB

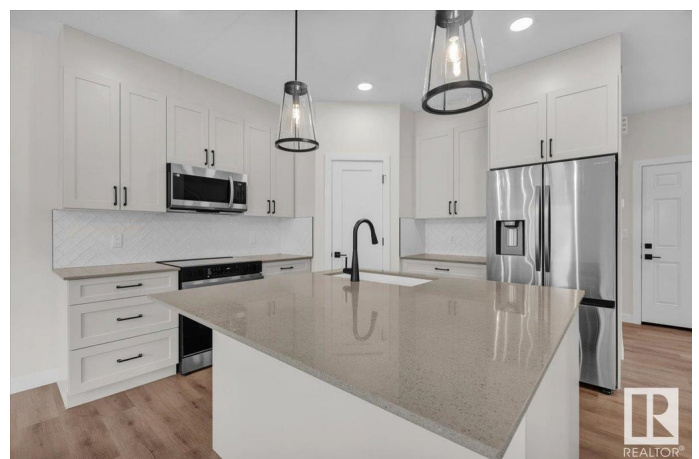
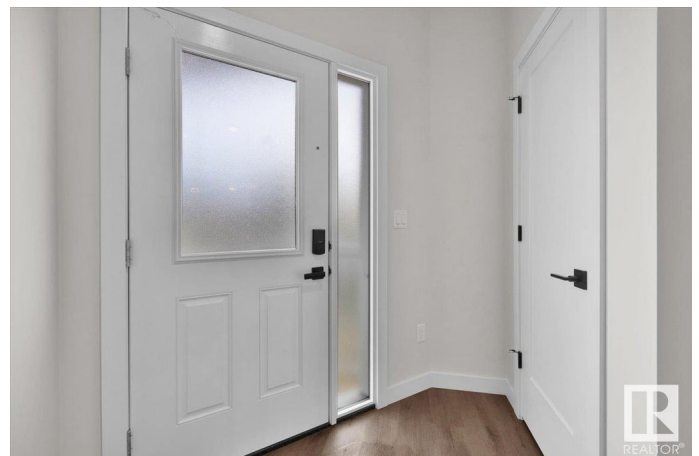
Proudly built by local long term builder Alquinn Homes, this stunning new two-storey offers a blend of expert craftsmanship, thoughtful design, and high-quality building materials that ensure long-lasting value. Set on a desirable corner lot with a side entrance, this home also features a west-facing backyard, perfect for enjoying full afternoon and evening sunlight—ideal for future outdoor living or a sunny garden. Inside, the bright, open-concept main floor offers a spacious living room with a cozy electric fireplace, a sleek kitchen with stainless steel appliances, a breakfast bar, and ample storage. A practical mudroom with a bench and cubbies at the back entrance helps keep the space organized, while a convenient 2pc bath adds function. Upstairs, you'll find 3 generously sized bedrooms, a 4pc main bath, laundry area, and a private primary suite with a 4pc ensuite and a walk-in closet. Immediate possession available—move in and make this beautiful home yours today! Photos are representative

Built in 2025

Essential Information

MLS® # E4433044

Price \$525,000



Bedrooms	3
Bathrooms	2.50
Full Baths	2
Half Baths	1
Square Footage	1,813
Acres	0.00
Year Built	2025
Type	Single Family
Sub-Type	Detached Single Family
Style	2 Storey
Status	Active

Community Information

Address	12 Springbrook Wynd
Area	Spruce Grove
Subdivision	Spruce Ridge
City	Spruce Grove
County	ALBERTA
Province	AB
Postal Code	T7X 2W5

Amenities

Amenities	No Animal Home, No Smoking Home
Parking	Double Garage Attached

Interior

Interior Features	ensuite bathroom
Appliances	Dishwasher-Built-In, Microwave Hood Fan, Refrigerator, Stove-Electric
Heating	Forced Air-1, Natural Gas
Stories	2
Has Basement	Yes
Basement	Full, Unfinished

Exterior

Exterior	Wood, Stone, Vinyl
Exterior Features	Corner Lot, Park/Reserve, Playground Nearby, Schools, Shopping Nearby
Roof	Asphalt Shingles
Construction	Wood, Stone, Vinyl

Foundation Concrete Perimeter

Additional Information

Date Listed April 25th, 2025

Days on Market 53

Zoning Zone 91

DATA IS DEEMED RELIABLE BUT IS NOT GUARANTEED ACCURATE BY THE REALTORS® ASSOCIATION OF EDMONTON. COPYRIGHT 2025 BY THE REALTORS® ASSOCIATION OF EDMONTON. ALL RIGHTS RESERVED.Trademarks are owned or controlled by the Canadian Real Estate Association (CREA) and identify real estate professionals who are members of CREA (REALTOR®, REALTORS®) and/or the quality of services they provide (MLS®, Multiple Listing Service®)

Listing information last updated on June 17th, 2025 at 3:02am MDT