

\$314,900 - 30 11 Clover Bar Lane, Sherwood Park

MLS® #E4434294

\$314,900

2 Bedroom, 2.50 Bathroom, 1,211 sqft

Condo / Townhouse on 0.00 Acres

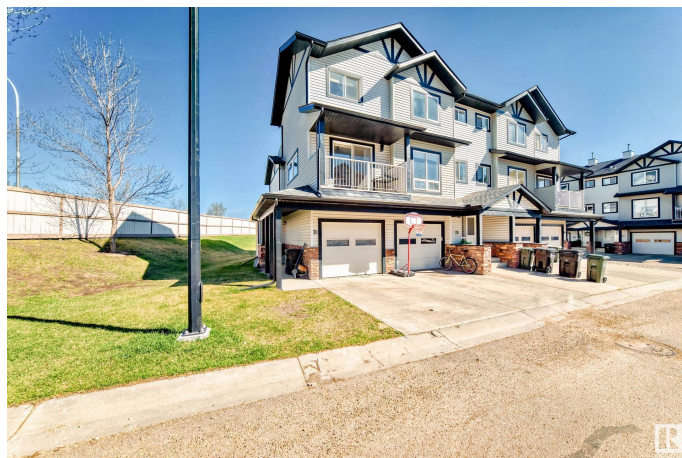
Summerwood, Sherwood Park, AB

Great opportunity for first time home buyer or investor! This beautiful two bedroom and two and half bath, attached garage, with fully finished basement townhouse in Summerwood is a must! The upstairs features primary bedroom with large walk-in closet, second bedroom, 4 piece bathroom, and a laundry area with storage. The main floor showcase lots of natural light through its windows, an open concept living room, kitchen with sliding door access to the patio which is perfect for BBQ or early morning coffee in the summer time. This well maintained lovely home comes with all it's appliances. It is close to schools, hospital, shopping, walking trails, playgrounds, and easy access to the main highway.

Built in 2008

Essential Information

MLS® #	E4434294
Price	\$314,900
Bedrooms	2
Bathrooms	2.50
Full Baths	2
Half Baths	1
Square Footage	1,211
Acres	0.00
Year Built	2008



Type	Condo / Townhouse
Sub-Type	Townhouse
Style	2 Storey
Status	Active

Community Information

Address	30 11 Clover Bar Lane
Area	Sherwood Park
Subdivision	Summerwood
City	Sherwood Park
County	ALBERTA
Province	AB
Postal Code	T8H 0C4

Amenities

Amenities	Patio
Parking	Front Drive Access, Single Garage Attached

Interior

Interior Features	ensuite bathroom
Appliances	Dishwasher-Built-In, Garage Control, Hood Fan, Refrigerator, Stove-Electric
Heating	Forced Air-1, Natural Gas
Stories	3
Has Basement	Yes
Basement	Full, Finished

Exterior

Exterior	Wood, Stone, Vinyl
Exterior Features	Golf Nearby, Landscaped, Playground Nearby, Public Transportation, Schools, Shopping Nearby
Roof	Asphalt Shingles
Construction	Wood, Stone, Vinyl
Foundation	Concrete Perimeter

Additional Information

Date Listed	May 3rd, 2025
Days on Market	47
Zoning	Zone 25

Condo Fee \$317

DATA IS DEEMED RELIABLE BUT IS NOT GUARANTEED ACCURATE BY THE REALTORS® ASSOCIATION OF EDMONTON. COPYRIGHT 2025 BY THE REALTORS® ASSOCIATION OF EDMONTON. ALL RIGHTS RESERVED.Trademarks are owned or controlled by the Canadian Real Estate Association (CREA) and identify real estate professionals who are members of CREA (REALTOR®, REALTORS®) and/or the quality of services they provide (MLS®, Multiple Listing Service®)

Listing information last updated on June 19th, 2025 at 8:32pm MDT