

\$579,900 - 656 171 Street, Edmonton

MLS® #E4435460

\$579,900

3 Bedroom, 2.50 Bathroom, 1,913 sqft

Single Family on 0.00 Acres

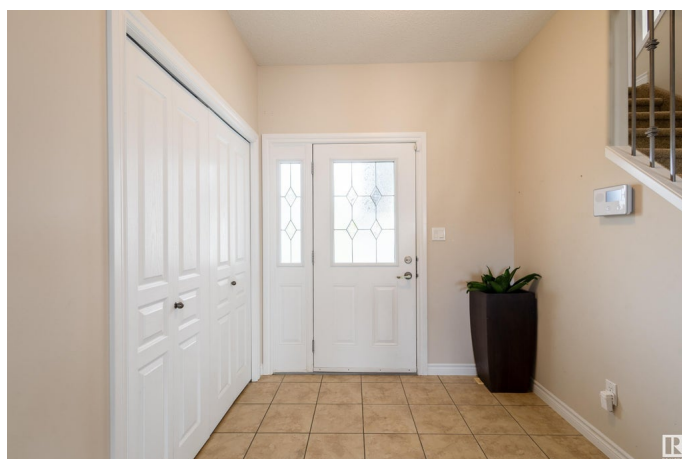
Windermere, Edmonton, AB

Imagine sipping your morning coffee while overlooking a serene park and pond! This air-conditioned home backs onto Landale Pond, greenspace, and an urban forest, offering natural light, peace, and comfort. The bright main floor features a spacious foyer, a cozy living room with a corner fireplace and hardwood floors, and a gourmet kitchen with ample cabinetry, granite countertops, stainless steel appliances, and a corner pantry. The dining area boasts stunning views. Upstairs, a vaulted BONUS room provides space for family entertainment. The primary suite includes a large walk-in closet and a 5-piece ensuite with pond views. Two additional bedrooms and a 4-piece bath complete the level. Heated garage. Close to parks, trails, and easy access to 170 Street & Currents at Windermere shopping. A perfect blend of modern design and functionality for family living!

Built in 2011

Essential Information

MLS® #	E4435460
Price	\$579,900
Bedrooms	3
Bathrooms	2.50
Full Baths	2



Half Baths	1
Square Footage	1,913
Acres	0.00
Year Built	2011
Type	Single Family
Sub-Type	Detached Single Family
Style	2 Storey
Status	Active

Community Information

Address	656 171 Street
Area	Edmonton
Subdivision	Windermere
City	Edmonton
County	ALBERTA
Province	AB
Postal Code	T6W 0M1

Amenities

Amenities	Air Conditioner, Deck, Detectors Smoke, Hot Water Natural Gas, No Animal Home, No Smoking Home, Vaulted Ceiling, Vinyl Windows
Parking	Double Garage Attached

Interior

Interior Features	ensuite bathroom
Appliances	Air Conditioning-Central, Dishwasher-Built-In, Dryer, Garage Control, Garage Opener, Hood Fan, Refrigerator, Stove-Electric, Washer, Window Coverings, Garage Heater
Heating	Forced Air-1, Natural Gas
Stories	2
Has Basement	Yes
Basement	Full, Unfinished

Exterior

Exterior	Wood, Vinyl
Exterior Features	Backs Onto Park/Trees, Fenced, Landscaped, Park/Reserve, Playground Nearby, Public Transportation, Schools, Shopping Nearby
Roof	Asphalt Shingles
Construction	Wood, Vinyl

Foundation Slab

School Information

Elementary Constable Daniel Woodall
Middle Riverbend School
High Lillian Osborne School

Additional Information

Date Listed May 9th, 2025
Days on Market 69
Zoning Zone 56

DATA IS DEEMED RELIABLE BUT IS NOT GUARANTEED ACCURATE BY THE REALTORS® ASSOCIATION OF EDMONTON. COPYRIGHT 2025 BY THE REALTORS® ASSOCIATION OF EDMONTON. ALL RIGHTS RESERVED.Trademarks are owned or controlled by the Canadian Real Estate Association (CREA) and identify real estate professionals who are members of CREA (REALTOR®, REALTORS®) and/or the quality of services they provide (MLS®, Multiple Listing Service®)
Listing information last updated on July 17th, 2025 at 1:03pm MDT