

\$204,900 - 84 13825 155 Avenue, Edmonton

MLS® #E4435750

\$204,900

2 Bedroom, 1.50 Bathroom, 1,028 sqft

Condo / Townhouse on 0.00 Acres

Carlton, Edmonton, AB

Affordable Living at Its Finest – First floor corner unit with 2 Bedroom Bungalow Townhouse in Tuscan Village! Condo fees include heat and water. This spacious and well-maintained 2-bedroom, 1.5-bath bungalow townhouse offers comfortable living with a bright kitchen, 2 great size bedrooms, main floor laundry, and a cozy fireplace in the living room. Enjoy the convenience of 2 underground parking stalls, and a great size family room in the basement and plenty of storage space. Private facing patio Located in the desirable Tuscan Village, this home combines affordability with practicality in a fantastic location close to amenities. Located in a great area, this home is ideal for first-time buyers, downsizers, or anyone looking for low-maintenance living without sacrificing space or convenience.

Built in 2008

Essential Information

MLS® #	E4435750
Price	\$204,900
Bedrooms	2
Bathrooms	1.50
Full Baths	1
Half Baths	1
Square Footage	1,028



Acres	0.00
Year Built	2008
Type	Condo / Townhouse
Sub-Type	Townhouse
Style	Bungalow
Status	Active

Community Information

Address	84 13825 155 Avenue
Area	Edmonton
Subdivision	Carlton
City	Edmonton
County	ALBERTA
Province	AB
Postal Code	T6V 0B8

Amenities

Amenities	No Animal Home, No Smoking Home, See Remarks
Parking	Parkade

Interior

Appliances	Dishwasher-Built-In, Dryer, Refrigerator, Stove-Electric, Washer
Heating	Heat Pump, Natural Gas
Stories	2
Has Basement	Yes
Basement	Partial, Finished

Exterior

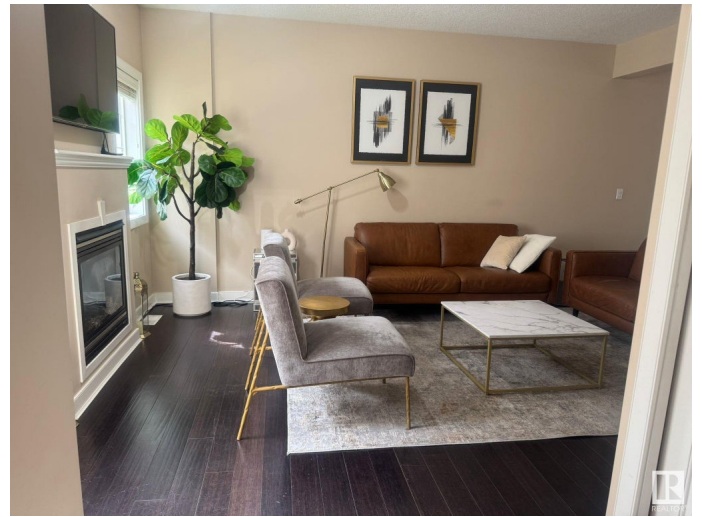
Exterior	Wood, Stucco
Exterior Features	Backs Onto Park/Trees, Landscaped, Playground Nearby, Public Transportation, Schools, Shopping Nearby
Roof	Asphalt Shingles
Construction	Wood, Stucco
Foundation	Concrete Perimeter

Additional Information

Date Listed	May 10th, 2025
Days on Market	15
Zoning	Zone 27

Condo Fee

\$636



DATA IS DEEMED RELIABLE BUT IS NOT GUARANTEED ACCURATE BY THE REALTORS® ASSOCIATION OF EDMONTON. COPYRIGHT 2025 BY THE REALTORS® ASSOCIATION OF EDMONTON. ALL RIGHTS RESERVED. Trademarks are owned or controlled by the Canadian Real Estate Association (CREA) and identify real estate professionals who are members of CREA (REALTOR®, REALTORS®) and/or the quality of services they provide (MLS®, Multiple Listing Service®)

Listing information last updated on May 25th, 2025 at 2:32pm MDT