

# \$430,000 - 1323 South Creek Link, Stony Plain

MLS® #E4436666

**\$430,000**

3 Bedroom, 2.50 Bathroom, 1,586 sqft  
Single Family on 0.00 Acres

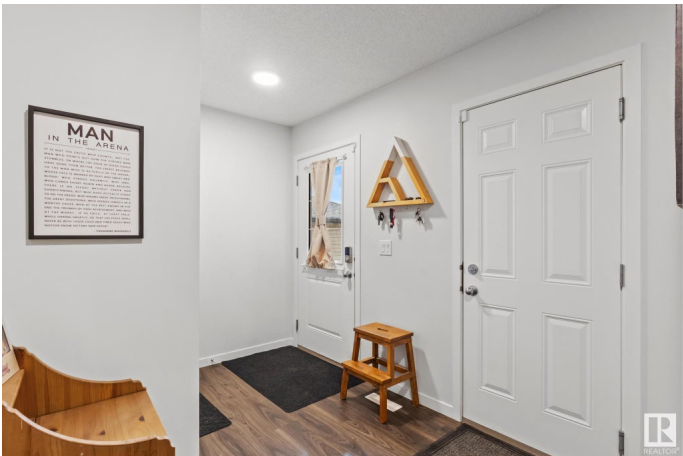
South Creek, Stony Plain, AB

Welcome to this semi-detached (duplex) home with a double garage attached to the vibrant South Creek community in Stony Plain. It has one single owner and is priced to sell. The entrance leads to a bright, open-concept main floor. The spacious kitchen boasts stainless steel appliances and modern cabinetry, with a quartz countertop. A 2-pc bathroom is also on the main floor. Upstairs, the bonus room separates the primary and the secondary rooms; the primary suite features a walk-in closet, a 4-pc ensuite, two more bedrooms, another full bath with laundry on the upper floor, and a linen closet. The basement is unfinished and waiting for your touch. Outside, the house is fully landscaped and comes with a deck. It is located minutes from schools, shopping, dining, and other amenities.

Built in 2022

## Essential Information

|                |           |
|----------------|-----------|
| MLS® #         | E4436666  |
| Price          | \$430,000 |
| Bedrooms       | 3         |
| Bathrooms      | 2.50      |
| Full Baths     | 2         |
| Half Baths     | 1         |
| Square Footage | 1,586     |
| Acres          | 0.00      |



|            |               |
|------------|---------------|
| Year Built | 2022          |
| Type       | Single Family |
| Sub-Type   | Half Duplex   |
| Style      | 2 Storey      |
| Status     | Active        |

### Community Information

|             |                       |
|-------------|-----------------------|
| Address     | 1323 South Creek Link |
| Area        | Stony Plain           |
| Subdivision | South Creek           |
| City        | Stony Plain           |
| County      | ALBERTA               |
| Province    | AB                    |
| Postal Code | T7Z 0K6               |

### Amenities

|           |                        |
|-----------|------------------------|
| Amenities | Deck                   |
| Parking   | Double Garage Attached |

### Interior

|                   |   |
|-------------------|---|
| Interior Features | ensuite bathroom  |
| Appliances        | Dishwasher-Built-In, Microwave Hood Fan, Refrigerator, Stacked Washer/Dryer, Stove-Electric |
| Heating           | Forced Air-1, Natural Gas   |
| Stories           | 2   |
| Has Basement      | Yes   |
| Basement          | Full, Unfinished  |

### Exterior

|                   |  |
|-------------------|--|
| Exterior          | Wood, Vinyl                            |
| Exterior Features | Landscaped, Playground Nearby, Schools |
| Roof              | Asphalt Shingles                       |
| Construction      | Wood, Vinyl                            |
| Foundation        | Concrete Perimeter                     |

### Additional Information

|                |                |
|----------------|----------------|
| Date Listed    | May 15th, 2025 |
| Days on Market | 33             |
| Zoning         | Zone 91        |

DATA IS DEEMED RELIABLE BUT IS NOT GUARANTEED ACCURATE BY THE REALTORS® ASSOCIATION OF EDMONTON. COPYRIGHT 2025 BY THE REALTORS® ASSOCIATION OF EDMONTON. ALL RIGHTS RESERVED.Trademarks are owned or controlled by the Canadian Real Estate Association (CREA) and identify real estate professionals who are members of CREA (REALTOR®, REALTORS®) and/or the quality of services they provide (MLS®, Multiple Listing Service®)

Listing information last updated on June 17th, 2025 at 1:17am MDT