

## \$340,000 - 10618 153 Street, Edmonton

MLS® #E4437493

**\$340,000**

5 Bedroom, 2.00 Bathroom, 995 sqft

Single Family on 0.00 Acres

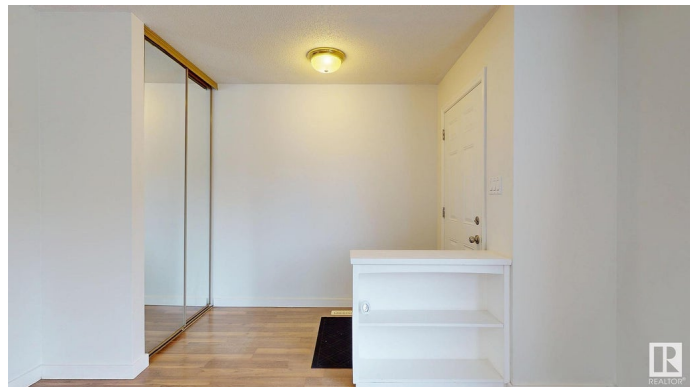
Canora, Edmonton, AB

Well maintained 995 square foot bungalow style half duplex, located on a quiet Street in Canora. This Home features a versatile layout with 3 bedrooms on the main floor, Family sized living room, kitchen with new built-in dishwasher, gas stove, fresh paint, laminate flooring & a 4 piece bathroom. New front and back doors, window coverings, upgraded interior doors & hardware. The fully finished lower level has 2 more bedrooms, Family room, laminate flooring, a 4 piece bath, 2025 Hot Water Tank, in addition to a newer washer and dryer. Side entrance gives access to both floors. It would be easy to convert the lower level to a suite if desired. Fenced rear yard had new sod last year, & has a spacious patio & double detached garage, with insulated walls & newer overhead door. Shingles on the Home and garage were done in the last year. New sod in front yard. The Property is situated close to Schools, Shopping, future LRT line and public transit. Long time owners have maintained the Home over the years.

Built in 1970

### Essential Information

MLS® #	E4437493
Price	\$340,000
Bedrooms	5



Bathrooms	2.00
Full Baths	2
Square Footage	995
Acres	0.00
Year Built	1970
Type	Single Family
Sub-Type	Half Duplex
Style	Bungalow
Status	Active

### **Community Information**

Address	10618 153 Street
Area	Edmonton
Subdivision	Canora
City	Edmonton
County	ALBERTA
Province	AB
Postal Code	T5P 2C5

### **Amenities**

Amenities	No Smoking Home, Patio
Parking Spaces	4
Parking	Double Garage Detached

### **Interior**

Appliances	Dishwasher-Built-In, Dryer, Fan-Ceiling, Garage Control, Garage Opener, Hood Fan, Refrigerator, Stove-Gas, Washer, Window Coverings
Heating	Forced Air-1, Natural Gas
Stories	2
Has Basement	Yes
Basement	Full, Finished

### **Exterior**

Exterior	Wood, Stucco
Exterior Features	Fenced, Landscaped, Paved Lane, Public Transportation, Recreation Use, Schools, Shopping Nearby
Lot Description	25.2' wide x 148.3' deep
Roof	Asphalt Shingles

Construction	Wood, Stucco
Foundation	Concrete Perimeter

**School Information**

Elementary	Brightview
Middle	Ecole Holy Cross
High	Ross Sheppard

**Additional Information**

Date Listed	May 20th, 2025
Days on Market	5
Zoning	Zone 21

DATA IS DEEMED RELIABLE BUT IS NOT GUARANTEED ACCURATE BY THE REALTORS® ASSOCIATION OF EDMONTON. COPYRIGHT 2025 BY THE REALTORS® ASSOCIATION OF EDMONTON. ALL RIGHTS RESERVED.Trademarks are owned or controlled by the Canadian Real Estate Association (CREA) and identify real estate professionals who are members of CREA (REALTOR®, REALTORS®) and/or the quality of services they provide (MLS®, Multiple Listing Service®)

Listing information last updated on May 25th, 2025 at 1:17pm MDT