

## \$669,000 - 22 Dillworth Crescent, Spruce Grove

MLS® #E4438167

**\$669,000**

4 Bedroom, 3.50 Bathroom, 2,535 sqft

Single Family on 0.00 Acres

Deer Park\_SPGR, Spruce Grove, AB

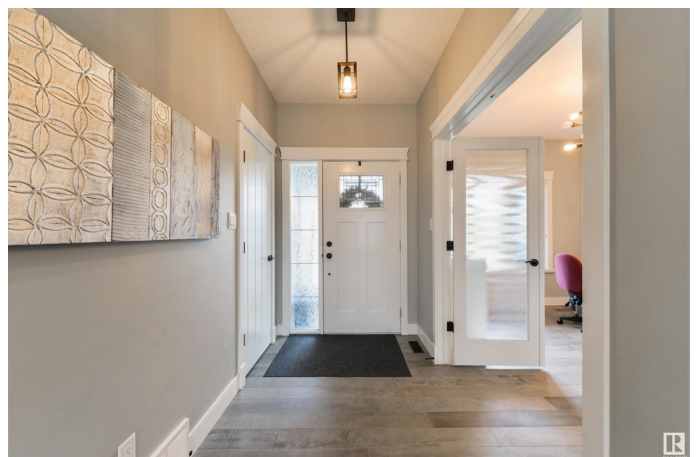
Experience luxury living in this CUSTOM-BUILT home! Featuring a wonderful floor plan, the main level highlights 9'™ ceilings, hardwood flooring, spacious office/den, cozy living room w/ gas fireplace, & a Chef's™ kitchen equipped w/ stone counters, stainless appliances, center island, separate dinette, & walk-through BUTLER's™ pantry leading to the mudroom & HEATED dbl-attached garage. Upstairs you'll find a bonus room, 5pc bath, & three sizeable bedrooms (each w/ their own walk-in closets), including the owner's™ suite which showcases French doors, & a 5pc spa-inspired ensuite w/ soaker tub, oversized tiled shower, & a fabulous walk-in closet w/ direct access to the laundry room. The basement is fully-finished & features a 4th bedroom (w/ walk-in closet), 3pc bath, & rec room (w/ future wet bar potential, if desired). Complete w/ A/C, an exterior deck, & a beautifully landscaped & fenced yard, this home offers a seamless blend of style, space, & functionality in one of Spruce Grove's™ most sought-after areas.

Built in 2014

### Essential Information

MLS® # E4438167

Price \$669,000



Bedrooms	4
Bathrooms	3.50
Full Baths	3
Half Baths	1
Square Footage	2,535
Acres	0.00
Year Built	2014
Type	Single Family
Sub-Type	Detached Single Family
Style	2 Storey
Status	Active

### Community Information

Address	22 Dillworth Crescent
Area	Spruce Grove
Subdivision	Deer Park_SPGR
City	Spruce Grove
County	ALBERTA
Province	AB
Postal Code	T7X 0E6

### Amenities

Amenities	Air Conditioner, Ceiling 9 ft., Deck, No Smoking Home, See Remarks
Parking	Double Garage Attached, Heated, Over Sized

### Interior

Interior Features	ensuite bathroom
Appliances	Alarm/Security System, Dishwasher-Built-In, Dryer, Garage Control, Garage Opener, Hood Fan, Oven-Microwave, Refrigerator, Storage Shed, Stove-Gas, Washer, Window Coverings, Wine/Beverage Cooler
Heating	Forced Air-1, Natural Gas
Fireplace	Yes
Fireplaces	See Remarks
Stories	3
Has Basement	Yes
Basement	Full, Finished

### Exterior

Exterior	Wood, Stone, Vinyl
----------	--------------------

Exterior Features	Fenced, Flat Site, Landscaped, Playground Nearby, Public Transportation, Schools, Shopping Nearby, See Remarks
Roof	Asphalt Shingles
Construction	Wood, Stone, Vinyl
Foundation	Concrete Perimeter

**Additional Information**

Date Listed	May 23rd, 2025
Days on Market	24
Zoning	Zone 91

DATA IS DEEMED RELIABLE BUT IS NOT GUARANTEED ACCURATE BY THE REALTORS® ASSOCIATION OF EDMONTON. COPYRIGHT 2025 BY THE REALTORS® ASSOCIATION OF EDMONTON. ALL RIGHTS RESERVED.Trademarks are owned or controlled by the Canadian Real Estate Association (CREA) and identify real estate professionals who are members of CREA (REALTOR®, REALTORS®) and/or the quality of services they provide (MLS®, Multiple Listing Service®)

Listing information last updated on June 16th, 2025 at 7:32pm MDT