

\$449,900 - 366 Charlesworth Drive, Edmonton

MLS® #E4438392

\$449,900

4 Bedroom, 3.50 Bathroom, 1,268 sqft

Single Family on 0.00 Acres

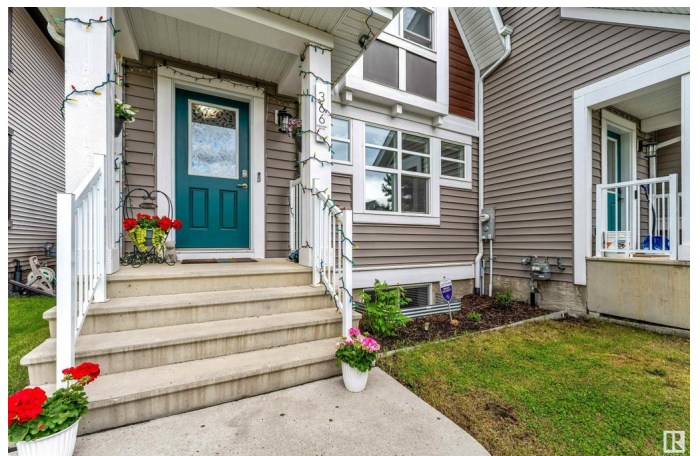
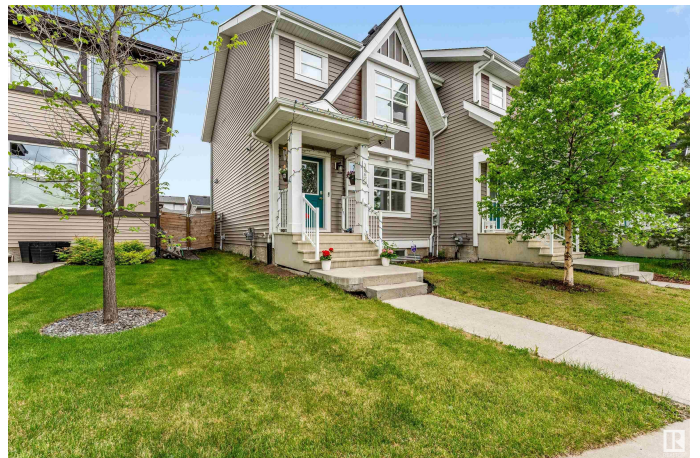
Charlesworth, Edmonton, AB

Experience modern living in this stunning NORTH FACING end unit in the award-winning community of The Hills at Charlesworthâ€”offering nearly 2,000 sq. ft. of fully finished space with no condo fees. The popular â€œOchoâ€™ model by Jayman features 4 bedrooms, 4 bathrooms, and a bright open-concept layout with modern finishings, stainless steel appliances, and upstairs laundry. Energy-efficient upgrades include triple-pane windows, tankless hot water, HRV system for long-term savings. The fully finished basement adds versatile living space with a huge bedroom, full bath, and flex areaâ€”plus potential for a side entrance (subject to city approval). Enjoy a sunny south-facing yard, double detached garage, and unbeatable location just steps from parks, two shopping plazas, pond, community garden, disc golf course, and amenities. Welcome home!

Built in 2016

Essential Information

MLS® #	E4438392
Price	\$449,900
Bedrooms	4
Bathrooms	3.50
Full Baths	3



Half Baths	1
Square Footage	1,268
Acres	0.00
Year Built	2016
Type	Single Family
Sub-Type	Residential Attached
Style	2 Storey
Status	Active

Community Information

Address	366 Charlesworth Drive
Area	Edmonton
Subdivision	Charlesworth
City	Edmonton
County	ALBERTA
Province	AB
Postal Code	T6X 2G5

Amenities

Amenities	Ceiling 9 ft., HRV System
Parking	Double Garage Detached

Interior

Interior Features	ensuite bathroom
Appliances	Dishwasher-Built-In, Dryer, Refrigerator, Stove-Electric, Washer
Heating	Forced Air-1, Natural Gas
Stories	3
Has Basement	Yes
Basement	Full, Finished

Exterior

Exterior	Wood, Vinyl
Exterior Features	Airport Nearby, Landscaped, Park/Reserve, Stream/Pond, Vegetable Garden, See Remarks
Roof	Asphalt Shingles
Construction	Wood, Vinyl
Foundation	Concrete Perimeter

Additional Information

Date Listed	May 24th, 2025
Days on Market	4
Zoning	Zone 53
HOA Fees	210
HOA Fees Freq.	Annually

DATA IS DEEMED RELIABLE BUT IS NOT GUARANTEED ACCURATE BY THE REALTORS® ASSOCIATION OF EDMONTON. COPYRIGHT 2025 BY THE REALTORS® ASSOCIATION OF EDMONTON. ALL RIGHTS RESERVED. Trademarks are owned or controlled by the Canadian Real Estate Association (CREA) and identify real estate professionals who are members of CREA (REALTOR®, REALTORS®) and/or the quality of services they provide (MLS®, Multiple Listing Service®)

Listing information last updated on May 28th, 2025 at 2:47pm MDT