

\$225,000 - 218 392 Silver Berry Road, Edmonton

MLS® #E4438627

\$225,000

2 Bedroom, 2.00 Bathroom, 858 sqft

Condo / Townhouse on 0.00 Acres

Silver Berry, Edmonton, AB

FANTASTIC VALUE IN A PRIME LOCATION... Walking distance to Brand New HIGH SCHOOL & REC CENTER. This spacious 2 BEDROOM, 2 BATHROOM unit comes complete with U/G PARKING STALL, STORAGE CAGE, and CAR WASH â€” WOW!! The building offers great AMENITIES like an EXERCISE ROOM and a PARTY ROOM for entertaining, all just steps from SILVERBERRY PARK â€” perfect for DOG WALKS, OUTDOOR FUN, or a GAME OF SOCCER. Inside, you'll love the functional layout featuring IN-SUITE LAUNDRY and a WALK-THROUGH CLOSET leading to a PRIVATE ENSUITE in the primary bedroom. Condo fees include HEAT AND WATER for added peace of mind. 2 Min Short WALK to SHOPPERS, SAVEN-ON-FOOD, RESTAURANTS, BANKS, and a PLAYGROUND, with QUICK ACCESS to ANTHONY HENDAY and WHITEMUD DRIVE for easy commuting. A MUST-SEE in a SOUGHT-AFTER COMMUNITY!

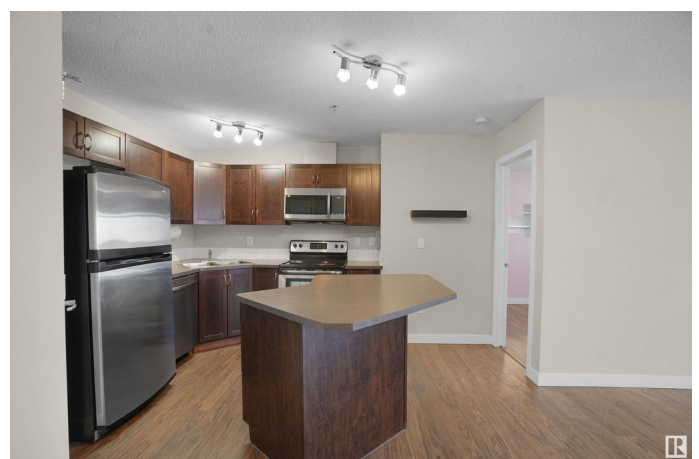
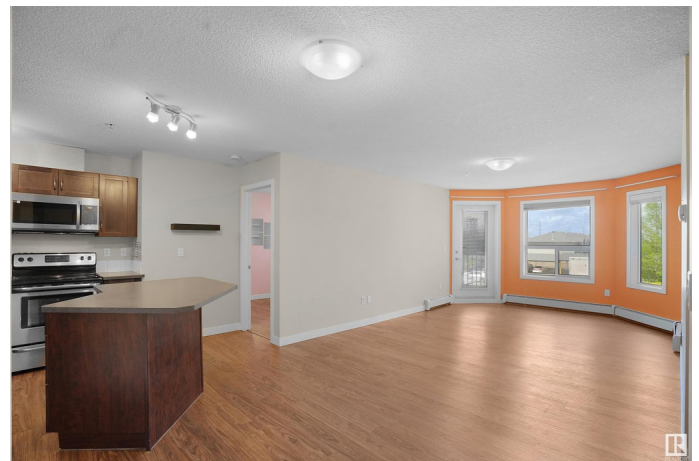
Built in 2009

Essential Information

MLS® # E4438627

Price \$225,000

Bedrooms 2



Bathrooms	2.00
Full Baths	2
Square Footage	858
Acres	0.00
Year Built	2009
Type	Condo / Townhouse
Sub-Type	Lowrise Apartment
Style	Single Level Apartment
Status	Active

Community Information

Address	218 392 Silver Berry Road
Area	Edmonton
Subdivision	Silver Berry
City	Edmonton
County	ALBERTA
Province	AB
Postal Code	T6T 0H1

Amenities

Amenities	Car Wash, Closet Organizers, Deck, Exercise Room, Parking-Visitor, Party Room, Security Door, Storage Cage
Parking Spaces	1
Parking	Underground

Interior

Interior Features	ensuite bathroom
Appliances	Dryer, Refrigerator, Stove-Electric, Washer, Window Coverings
Heating	Baseboard, Natural Gas
# of Stories	4
Stories	1
Has Basement	Yes
Basement	None, No Basement

Exterior

Exterior	Wood, Brick, Vinyl
Exterior Features	Playground Nearby, Public Transportation, Schools, Shopping Nearby, See Remarks
Roof	Asphalt Shingles

Construction	Wood, Brick, Vinyl
Foundation	Concrete Perimeter

Additional Information

Date Listed	May 26th, 2025
Days on Market	21
Zoning	Zone 30
Condo Fee	\$395

DATA IS DEEMED RELIABLE BUT IS NOT GUARANTEED ACCURATE BY THE REALTORS® ASSOCIATION OF EDMONTON. COPYRIGHT 2025 BY THE REALTORS® ASSOCIATION OF EDMONTON. ALL RIGHTS RESERVED.Trademarks are owned or controlled by the Canadian Real Estate Association (CREA) and identify real estate professionals who are members of CREA (REALTOR®, REALTORS®) and/or the quality of services they provide (MLS®, Multiple Listing Service®)

Listing information last updated on June 16th, 2025 at 10:17am MDT