

\$279,900 - 216 320 Ambleside Link Link, Edmonton

MLS® #E4439399

\$279,900

2 Bedroom, 2.00 Bathroom, 850 sqft

Condo / Townhouse on 0.00 Acres

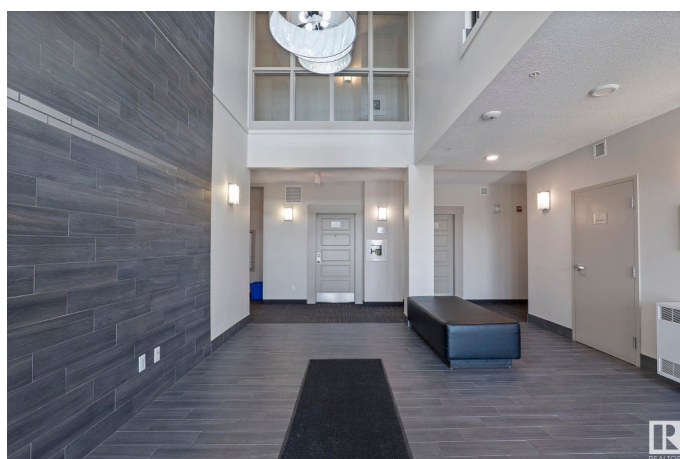
Ambleside, Edmonton, AB

2-Bed, 2-Bath Condo in L'Attitude Studios with 2-Titled Parking Stalls – This move-in ready unit is located in the desirable SW community Ambleside and offers a modern open floor plan with sleek, upgraded finishes and 9 foot ceilings. Spacious kitchen with large island, granite countertops, stainless steel appliances, and a pantry. Bright living area with built-in tech space and direct access to a sunny west-facing balcony – With Gas BBQ Hookup. The primary bedroom includes a walk-through closet and 3-piece en-suite, while the second bedroom is located on the opposite side and also boasts a walk-through closet with access to the main 4-piece bath. In-suite laundry, Built in Portable AC Vent, One heated underground stall with storage cage and one surface add convenience. Enjoy building amenities like a fully-equipped gym, social room, and guest suite. Ideally located near parks, shopping, dining, public transit, and major roads. Ideal for professionals, Investors and small families!

Built in 2014

Essential Information

MLS® #	E4439399
Price	\$279,900
Bedrooms	2
Bathrooms	2.00



Full Baths	2
Square Footage	850
Acres	0.00
Year Built	2014
Type	Condo / Townhouse
Sub-Type	Lowrise Apartment
Style	Single Level Apartment
Status	Active

Community Information

Address	216 320 Ambleside Link Link
Area	Edmonton
Subdivision	Ambleside
City	Edmonton
County	ALBERTA
Province	AB
Postal Code	T6W 2Z9

Amenities

Amenities	Ceiling 9 ft., Exercise Room, Guest Suite, Parking-Visitor, Party Room, Secured Parking, See Remarks, Storage Cage, Natural Gas BBQ Hookup
Parking	Heated, Parkade, Stall, Underground, See Remarks

Interior

Interior Features	ensuite bathroom
Appliances	Dishwasher-Built-In, Dryer, Microwave Hood Fan, Refrigerator, Stove-Electric, Washer, Window Coverings
Heating	Baseboard, Hot Water, Natural Gas
# of Stories	4
Stories	4
Has Basement	Yes
Basement	None, No Basement

Exterior

Exterior	Wood, Stucco
Exterior Features	Flat Site, Golf Nearby, Landscaped, Level Land, Public Transportation, Shopping Nearby, See Remarks
Roof	Flat

Construction	Wood, Stucco
Foundation	Concrete Perimeter

Additional Information

Date Listed	May 30th, 2025
Days on Market	17
Zoning	Zone 56
HOA Fees	50
HOA Fees Freq.	Annually
Condo Fee	\$492

DATA IS DEEMED RELIABLE BUT IS NOT GUARANTEED ACCURATE BY THE REALTORS® ASSOCIATION OF EDMONTON. COPYRIGHT 2025 BY THE REALTORS® ASSOCIATION OF EDMONTON. ALL RIGHTS RESERVED.Trademarks are owned or controlled by the Canadian Real Estate Association (CREA) and identify real estate professionals who are members of CREA (REALTOR®, REALTORS®) and/or the quality of services they provide (MLS®, Multiple Listing Service®)

Listing information last updated on June 16th, 2025 at 2:17pm MDT