

\$275,500 - 301 9927 79 Avenue, Edmonton

MLS® #E4441150

\$275,500

2 Bedroom, 2.00 Bathroom, 849 sqft

Condo / Townhouse on 0.00 Acres

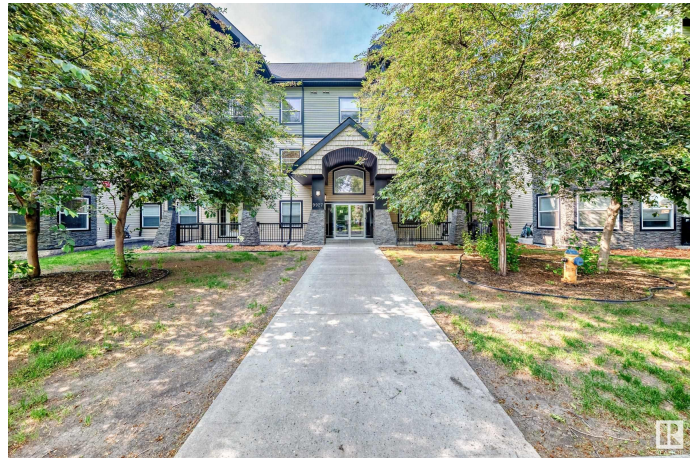
Ritchie, Edmonton, AB

Welcome to Solstice Off Whyte! Nestled in the vibrant Ritchie community, this bright top-floor condo offers the perfect blend of modern living and location. Steps to Whyte Ave, Old Strathcona Farmers Market, Mill Creek Ravine, and the river valley trail system. Quick access to the U of A and downtown. This 2-bedroom, 2-bath unit features 849 sq ft of open-concept space. The kitchen boasts ample cabinets, a large peninsula with breakfast bar, espresso cabinetry, and flows into the dining area and living room with vaulted ceiling, south-facing windows, electric fireplace, and access to a private patio with gas BBQ hookup. The primary suite includes a walk-through closet and 4-piece ensuite. The second bedroom is on the opposite side for privacyâ€”ideal for a roommate or office. Second full bath, in-suite laundry with storage, and no neighbors above. Bonus: 2 titled stallsâ€”1 heated underground with storage cage, 1 surface stall.

Built in 2007

Essential Information

MLS® #	E4441150
Price	\$275,500
Bedrooms	2
Bathrooms	2.00



Full Baths	2
Square Footage	849
Acres	0.00
Year Built	2007
Type	Condo / Townhouse
Sub-Type	Lowrise Apartment
Style	Single Level Apartment
Status	Active

Community Information

Address	301 9927 79 Avenue
Area	Edmonton
Subdivision	Ritchie
City	Edmonton
County	ALBERTA
Province	AB
Postal Code	T6E 1R3

Amenities

Amenities	Air Conditioner, Intercom, Secured Parking, Sprinkler System-Fire, Storage Cage
Parking	Heated, Parkade, Stall, Underground

Interior

Interior Features	ensuite bathroom
Appliances	Air Conditioning-Central, Dishwasher-Built-In, Microwave Hood Fan, Refrigerator, Stacked Washer/Dryer, Stove-Electric
Heating	Baseboard, Water
# of Stories	3
Stories	3
Has Basement	Yes
Basement	None, No Basement

Exterior

Exterior	Wood, Stone, Vinyl
Exterior Features	Paved Lane, Schools, Shopping Nearby
Roof	Asphalt Shingles
Construction	Wood, Stone, Vinyl
Foundation	Concrete Perimeter

Additional Information

Date Listed	June 7th, 2025
Days on Market	2
Zoning	Zone 17
Condo Fee	\$491

DATA IS DEEMED RELIABLE BUT IS NOT GUARANTEED ACCURATE BY THE REALTORS® ASSOCIATION OF EDMONTON. COPYRIGHT 2025 BY THE REALTORS® ASSOCIATION OF EDMONTON. ALL RIGHTS RESERVED.Trademarks are owned or controlled by the Canadian Real Estate Association (CREA) and identify real estate professionals who are members of CREA (REALTOR®, REALTORS®) and/or the quality of services they provide (MLS®, Multiple Listing Service®)

Listing information last updated on June 9th, 2025 at 6:17am MDT