

\$208,800 - 604 10238 103 Street, Edmonton

MLS® #E4441200

\$208,800

1 Bedroom, 1.00 Bathroom, 444 sqft

Condo / Townhouse on 0.00 Acres

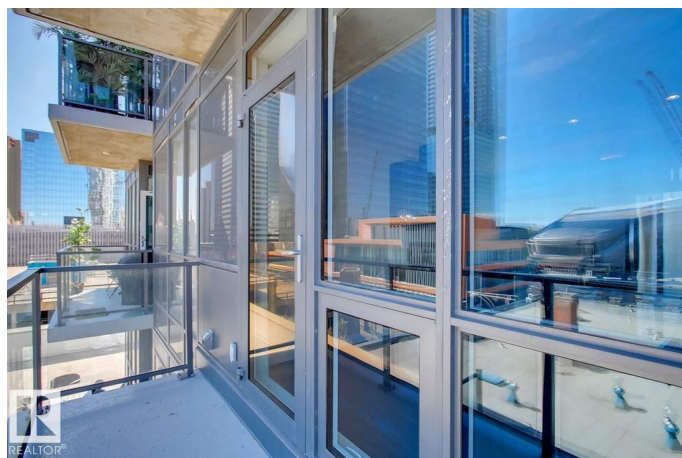
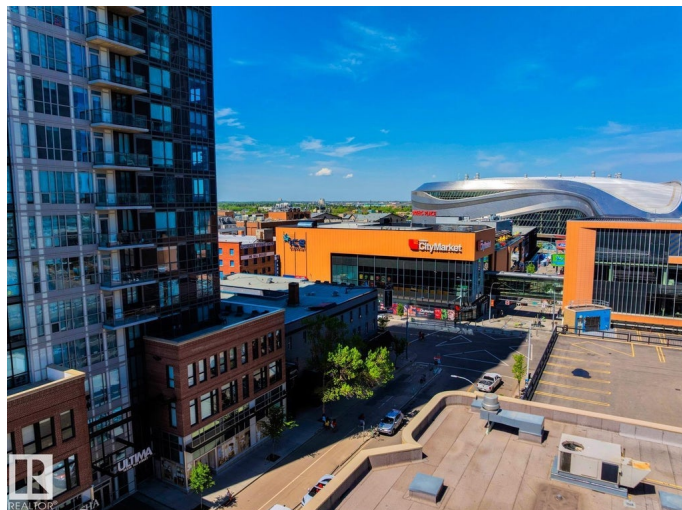
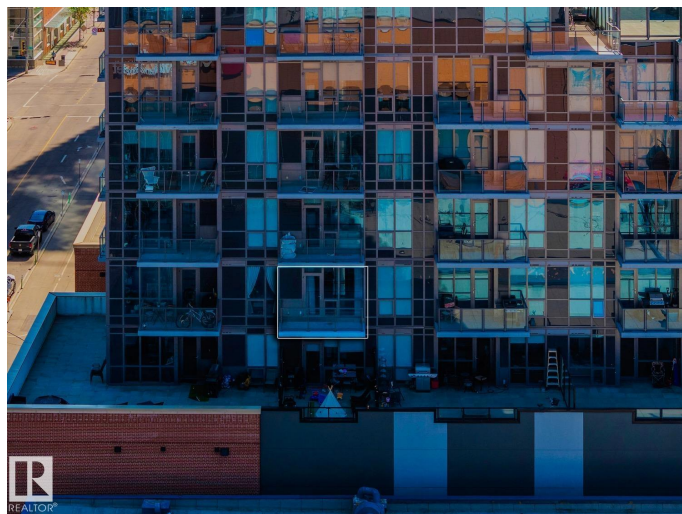
Downtown (Edmonton), Edmonton, AB

THE ULTIMA - in the heart of the YEG ICE District. Can you imagine walking to work every day & living the ultimate downtown lifestyle! Over 444sqft of finished living space â€” 1 BEDROOM â€” LIVING ROOM, KITCHEN, DINING AREA, 3 piece bathroom, in-suite LAUNDRY, storage & UNDERGROUND PARKING stall all included. Step inside this extremely well-designed condo & you will love the fully equipped kitchen with ample storage & prep space - open to kitchen is the dining area. Sit & relax in the living room enjoying the downtown views. Through the patio doors â€” the spacious outdoor living space has views of all city life. Back inside the master bedroom is good size with additional storage â€” laundry & 3 piece bath complete this condo. Walk to every amenity â€” restaurants, cafes, movies, concerts & sporting events!

Built in 2016

Essential Information

MLS® #	E4441200
Price	\$208,800
Bedrooms	1
Bathrooms	1.00
Full Baths	1
Square Footage	444



Acres	0.00
Year Built	2016
Type	Condo / Townhouse
Sub-Type	Apartment High Rise
Style	Single Level Apartment
Status	Active

Community Information

Address	604 10238 103 Street
Area	Edmonton
Subdivision	Downtown (Edmonton)
City	Edmonton
County	ALBERTA
Province	AB
Postal Code	T5J 0G6

Amenities

Amenities	Air Conditioner, Ceiling 9 ft., Detectors Smoke, Exercise Room, Intercom, No Smoking Home, Parking-Visitor, Party Room, Secured Parking, Security Door
Parking Spaces	1
Parking	Heated, Underground

Interior

Appliances	Air Conditioning-Central, Dishwasher-Built-In, Dryer, Garage Opener, Oven-Microwave, Refrigerator, Stove-Electric, Washer, Window Coverings
Heating	Heat Pump, Natural Gas
# of Stories	32
Stories	1
Has Basement	Yes
Basement	None, No Basement

Exterior

Exterior	Concrete, Brick, Metal
Exterior Features	Public Transportation, Schools, Shopping Nearby, View City, View Downtown
Roof	EPDM Membrane
Construction	Concrete, Brick, Metal
Foundation	Concrete Perimeter

School Information

Elementary	Garneau School
Middle	McKernan School
High	Victoria School

Additional Information

Date Listed	June 8th, 2025
Days on Market	75
Zoning	Zone 12
Condo Fee	\$332

DATA IS DEEMED RELIABLE BUT IS NOT GUARANTEED ACCURATE BY THE REALTORS® ASSOCIATION OF EDMONTON. COPYRIGHT 2025 BY THE REALTORS® ASSOCIATION OF EDMONTON. ALL RIGHTS RESERVED.Trademarks are owned or controlled by the Canadian Real Estate Association (CREA) and identify real estate professionals who are members of CREA (REALTOR®, REALTORS®) and/or the quality of services they provide (MLS®, Multiple Listing Service®)

Listing information last updated on August 22nd, 2025 at 9:17am MDT