

\$269,900 - 1506 Tamarack Boulevard, Edmonton

MLS® #E4441244

\$269,900

2 Bedroom, 1.00 Bathroom, 867 sqft

Condo / Townhouse on 0.00 Acres

Tamarack, Edmonton, AB

Welcome to this bright and stylish top-floor 2-bedroom, 1-bathroom condo located in the vibrant community of Tamarack. This well-designed unit offers an efficient open-concept layout, maximizing every square foot for comfortable, modern living. The upgraded kitchen features sleek cabinetry, stainless steel appliances, and a large island—perfect for casual dining or entertaining. The living area offers a vaulted ceiling and flows effortlessly to your private balcony, offering unobstructed views and a quiet place to unwind. The unit includes in-suite laundry and secure underground parking—a huge bonus during Edmonton’s winters. Enjoy the convenience of being minutes from shopping at Tamarack Common, Meadows Rec Centre, major transit routes, and easy access to Whitemud and Anthony Henday. Ideal for first-time buyers, downsizers, or investors. Move-in ready and priced to sell—this one checks all the boxes!

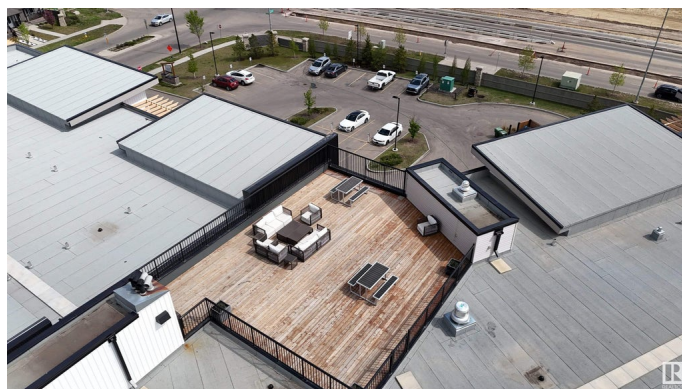
Built in 2019

Essential Information

MLS® # E4441244

Price \$269,900

Bedrooms 2



Bathrooms	1.00
Full Baths	1
Square Footage	867
Acres	0.00
Year Built	2019
Type	Condo / Townhouse
Sub-Type	Lowrise Apartment
Style	Single Level Apartment
Status	Active

Community Information

Address	1506 Tamarack Boulevard
Area	Edmonton
Subdivision	Tamarack
City	Edmonton
County	ALBERTA
Province	AB
Postal Code	T6T 2J5

Amenities

Amenities	Carbon Monoxide Detectors, Detectors Smoke, No Smoking Home, Parking-Visitor, Smart/Program. Thermostat, Secured Parking, Storage-Locker Room, Vaulted Ceiling, Rooftop Deck/Patio
Parking Spaces	1
Parking	Underground

Interior

Appliances	Dishwasher-Built-In, Garage Opener, Microwave Hood Fan, Refrigerator, Stacked Washer/Dryer, Stove-Electric
Heating	Hot Water, Natural Gas
# of Stories	4
Stories	1
Has Basement	Yes
Basement	None, No Basement

Exterior

Exterior	Wood, Stone, Vinyl
Exterior Features	Airport Nearby, Commercial, Landscaped, Playground Nearby, Public Transportation, Schools, Shopping Nearby, Vegetable Garden

Roof	EPDM Membrane
Construction	Wood, Stone, Vinyl
Foundation	Concrete Perimeter

Additional Information

Date Listed	June 8th, 2025
Days on Market	1
Zoning	Zone 30
Condo Fee	\$411

DATA IS DEEMED RELIABLE BUT IS NOT GUARANTEED ACCURATE BY THE REALTORS® ASSOCIATION OF EDMONTON. COPYRIGHT 2025 BY THE REALTORS® ASSOCIATION OF EDMONTON. ALL RIGHTS RESERVED.Trademarks are owned or controlled by the Canadian Real Estate Association (CREA) and identify real estate professionals who are members of CREA (REALTOR®, REALTORS®) and/or the quality of services they provide (MLS®, Multiple Listing Service®)

Listing information last updated on June 9th, 2025 at 6:32am MDT