

\$580,000 - 8 61 Lafleur Drive, St. Albert

MLS® #E4441502

\$580,000

3 Bedroom, 2.50 Bathroom, 1,270 sqft

Condo / Townhouse on 0.00 Acres

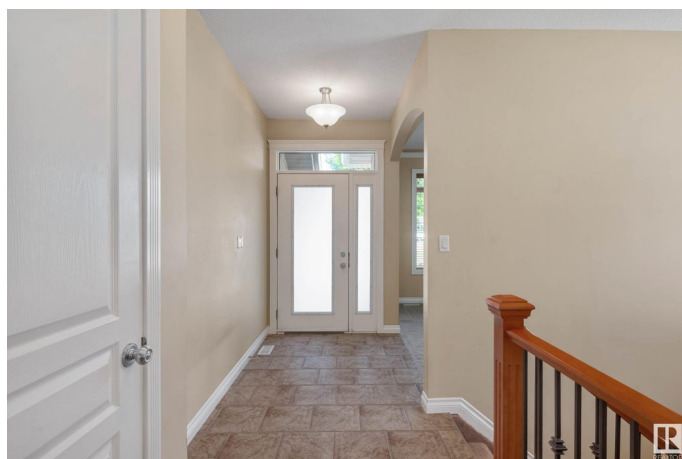
Lacombe Park, St. Albert, AB

Discover tranquility in this stunning 1270 sq ft, fully finished bungalow, nestled in a quiet adult community. Designed for discerning adults, this home boasts 3 bedrooms and 2.5 baths, including a spacious primary suite with a walk-in closet and full ensuite. Cozy up by one of two gas fireplaces, or enjoy the elegance of a stone exterior, air conditioning, and an attached double garage. Step outside to a beautifully manicured landscape and a private composite deck – ideal for relaxing. With two additional bedrooms and a full bath downstairs, there's ample space for guests or hobbies. Close to parks and shopping, and with quick possession available, this desirable complex offers the ultimate in comfortable, convenient living. Don't miss out!

Built in 2007

Essential Information

| | |
|----------------|-----------|
| MLS® # | E4441502 |
| Price | \$580,000 |
| Bedrooms | 3 |
| Bathrooms | 2.50 |
| Full Baths | 2 |
| Half Baths | 1 |
| Square Footage | 1,270 |
| Acres | 0.00 |



| | |
|------------|-------------------|
| Year Built | 2007 |
| Type | Condo / Townhouse |
| Sub-Type | Half Duplex |
| Style | Bungalow |
| Status | Active |

Community Information

| | |
|-------------|--------------------|
| Address | 8 61 Lafleur Drive |
| Area | St. Albert |
| Subdivision | Lacombe Park |
| City | St. Albert |
| County | ALBERTA |
| Province | AB |
| Postal Code | T8N 0X5 |

Amenities

| | |
|-----------|---|
| Amenities | Air Conditioner, Deck, Detectors Smoke, No Smoking Home, Parking-Visitor, Vinyl Windows |
| Parking | Double Garage Attached, Insulated |

Interior

| | |
|-------------------|---|
| Interior Features | ensuite bathroom |
| Appliances | Air Conditioning-Central, Dishwasher-Built-In, Garage Control, Refrigerator, Stacked Washer/Dryer, Stove-Electric, Window Coverings |
| Heating | Forced Air-1, Natural Gas |
| Fireplace | Yes |
| Fireplaces | Glass Door |
| Stories | 2 |
| Has Basement | Yes |
| Basement | Full, Finished |

Exterior

| | |
|-------------------|--|
| Exterior | Wood, Composition, Stucco |
| Exterior Features | Golf Nearby, Level Land, Low Maintenance Landscape, Not Fenced, Playground Nearby, Private Setting, Public Transportation, Shopping Nearby |
| Roof | Asphalt Shingles |
| Construction | Wood, Composition, Stucco |
| Foundation | Concrete Perimeter |

Additional Information

| | |
|----------------|-----------------|
| Date Listed | June 10th, 2025 |
| Days on Market | 7 |
| Zoning | Zone 24 |
| Condo Fee | \$500 |

DATA IS DEEMED RELIABLE BUT IS NOT GUARANTEED ACCURATE BY THE REALTORS® ASSOCIATION OF EDMONTON. COPYRIGHT 2025 BY THE REALTORS® ASSOCIATION OF EDMONTON. ALL RIGHTS RESERVED.Trademarks are owned or controlled by the Canadian Real Estate Association (CREA) and identify real estate professionals who are members of CREA (REALTOR®, REALTORS®) and/or the quality of services they provide (MLS®, Multiple Listing Service®)

Listing information last updated on June 17th, 2025 at 5:47am MDT