

**\$4,999,990**

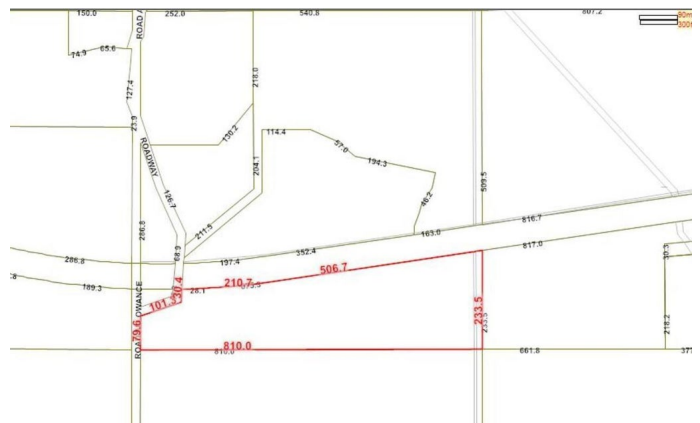
None, Rural Parkland County, AB

PRIME DEVELOPMENT OPPORTUNITY! 73 Acres of land just West of The Brickyard West Stony Plain! An exceptional opportunity to acquire a strategically located parcel of land just south of Highway 16a, ideally positioned right next to the fast-growing Suburb of Stony Plain.



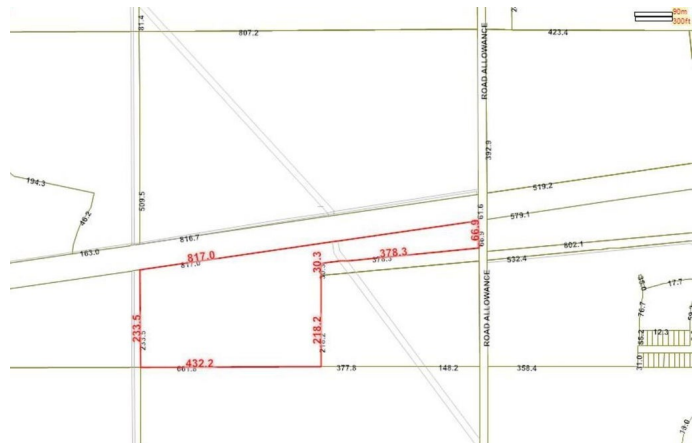
## Essential Information

|           |                 |
|-----------|-----------------|
| MLS® #    | E4441582        |
| Price     | \$4,999,990     |
| Bathrooms | 0.00            |
| Acres     | 72.70           |
| Type      | Rural           |
| Sub-Type  | Vacant Lot/Land |
| Status    | Active          |



## Community Information

|             |                       |
|-------------|-----------------------|
| Address     | N/A                   |
| Area        | Rural Parkland County |
| Subdivision | None                  |
| City        | Rural Parkland County |
| County      | ALBERTA               |
| Province    | AB                    |
| Postal Code | T7Z 0H9               |



## Exterior

Exterior Features    See Remarks

**Additional Information**

Date Listed                June 10th, 2025  
Days on Market        14  
Zoning                      Zone 91

DATA IS DEEMED RELIABLE BUT IS NOT GUARANTEED ACCURATE BY THE REALTORS® ASSOCIATION OF EDMONTON. COPYRIGHT 2025 BY THE REALTORS® ASSOCIATION OF EDMONTON. ALL RIGHTS RESERVED.Trademarks are owned or controlled by the Canadian Real Estate Association (CREA) and identify real estate professionals who are members of CREA (REALTOR®, REALTORS®) and/or the quality of services they provide (MLS®, Multiple Listing Service®)  
Listing information last updated on June 24th, 2025 at 5:02pm MDT