

\$529,000 - 43 Rosa Crescent, St. Albert

MLS® #E4441584

\$529,000

3 Bedroom, 2.50 Bathroom, 1,658 sqft

Single Family on 0.00 Acres

Riverside (St. Albert), St. Albert, AB

LOCATION.....Custom Built 1650 SQFT.
OPEN TO ABOVE HIGH CEILING IN FRONT
ENTRANCE. This home offers you Den on
Main floor. Separate entrance to basement.
Option to develop 2 bedroom legal basement.
Built on single family lot. 3 Bedrooms on
second floor. Huge living room with big
windows and 8ft high front entrance door.
Electric fireplace with Mantle and wood work.
Custom kitchen cabinets with huge dinning
area. 12 feet long kitchen island with Quartz
counter top. Soft close doors and drawers with
quartz counter tops. Built in appliances option
with gas cook top. Three bedrooms on second
floor. Master Ensuite with soaker tub and
standing custom shower. Under mount sink
with premium Quartz counter tops. Upgraded
interior finishes with Maple hand rail to the
second level. Covered front entrance with
precast concrete stairs. Indent ceilings and
feature wall in Master bedroom. Double Car
parking pad in the back. High efficiency
Furnace and Tank. Much more.....

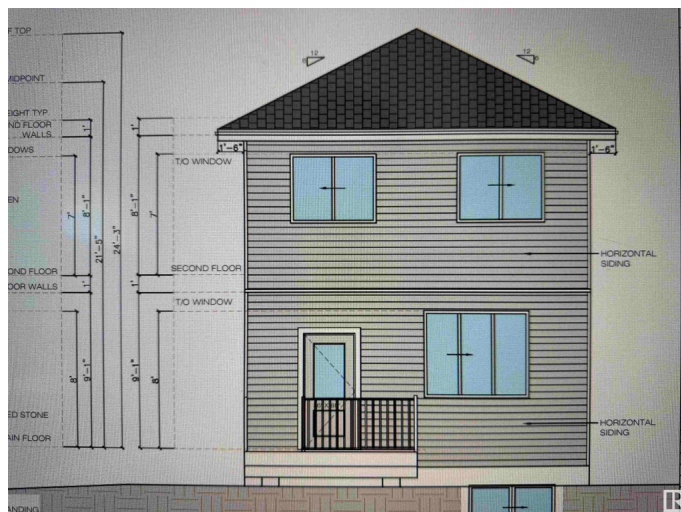
Built in 2025

Essential Information

MLS® # E4441584

Price \$529,000

Bedrooms 3



Bathrooms	2.50
Full Baths	2
Half Baths	1
Square Footage	1,658
Acres	0.00
Year Built	2025
Type	Single Family
Sub-Type	Detached Single Family
Style	2 Storey
Status	Active

Community Information

Address	43 Rosa Crescent
Area	St. Albert
Subdivision	Riverside (St. Albert)
City	St. Albert
County	ALBERTA
Province	AB
Postal Code	T8N 8B7

Amenities

Amenities	Ceiling 9 ft., Deck
Parking	Parking Pad Cement/Paved

Interior

Interior Features	ensuite bathroom
Appliances	Hood Fan
Heating	Forced Air-1, Natural Gas
Fireplace	Yes
Fireplaces	Mantel
Stories	2
Has Basement	Yes
Basement	Full, Unfinished

Exterior

Exterior	Wood, Stone, Vinyl
Exterior Features	Environmental Reserve, Flat Site, Golf Nearby, Park/Reserve, Playground Nearby, Shopping Nearby, See Remarks
Roof	Asphalt Shingles

Construction	Wood, Stone, Vinyl
Foundation	Concrete Perimeter

Additional Information

Date Listed	June 10th, 2025
Days on Market	42
Zoning	Zone 24

DATA IS DEEMED RELIABLE BUT IS NOT GUARANTEED ACCURATE BY THE REALTORS® ASSOCIATION OF EDMONTON. COPYRIGHT 2025 BY THE REALTORS® ASSOCIATION OF EDMONTON. ALL RIGHTS RESERVED.Trademarks are owned or controlled by the Canadian Real Estate Association (CREA) and identify real estate professionals who are members of CREA (REALTOR®, REALTORS®) and/or the quality of services they provide (MLS®, Multiple Listing Service®)

Listing information last updated on July 21st, 2025 at 10:17pm MDT