

\$399,000 - 9923 103 Street, Edmonton

MLS® #E4442038

\$399,000

2 Bedroom, 2.00 Bathroom, 1,322 sqft
Condo / Townhouse on 0.00 Acres

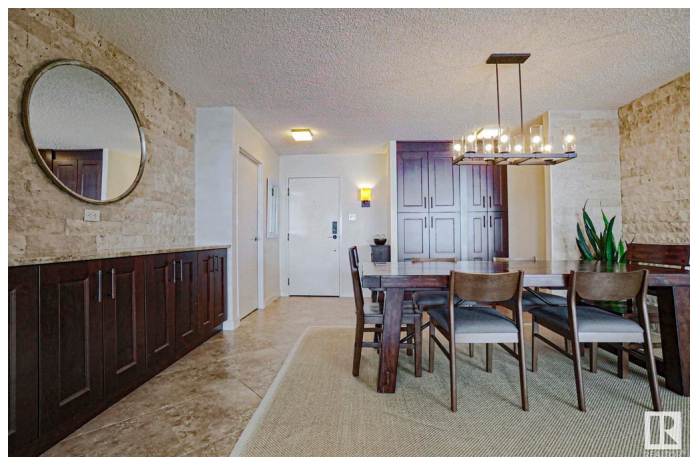
Downtown (Edmonton), Edmonton, AB

Welcome to this 2 bed, 2 full bath EXECUTIVE CONDO in the prestigious Valley Towers. With over 1300 sq ft, this unit exudes LUXURY and ELEGANCE. The kitchen boasts full-height wood cabinets, granite counters, and stainless steel appliances. The open dining area features two stone feature walls and flows into the spacious living room with TWO south-facing balconies offering gorgeous RIVER VALLEY VIEWS. The primary bedroom includes double closets and a full ensuite with a separate vanity area. The second bedroom/den has French doors and built-in shelving. Italian porcelain tile flows throughout, including both balconies. Valley Towers offers only 3 units per floor and unmatched amenities: indoor pool, sauna, steam room, gym, social and hobby rooms, private gardens, gated visitor parking, and titled heated U/G parking with storage. Condo fees cover all amenities and ALL UTILITIES including TV. WALK to LRT, Rogers Place, and more! This home shows 10/10 with NEW PAINT THROUGHOUT!!

Built in 1977

Essential Information

MLS® #	E4442038
Price	\$399,000



Bedrooms	2
Bathrooms	2.00
Full Baths	2
Square Footage	1,322
Acres	0.00
Year Built	1977
Type	Condo / Townhouse
Sub-Type	Apartment High Rise
Style	Single Level Apartment
Status	Active

Community Information

Address	9923 103 Street
Area	Edmonton
Subdivision	Downtown (Edmonton)
City	Edmonton
County	ALBERTA
Province	AB
Postal Code	T5K 2J3

Amenities

Amenities	Barbecue-Built-In, Exercise Room, Hot Tub, Intercom, Parking-Visitor, Party Room, Patio, Pool-Indoor, Recreation Room/Centre, Sauna; Swirlpool; Steam, Secured Parking, Workshop, Storage Cage
Parking	Heated, Parkade, Underground
Has Pool	Yes

Interior

Interior Features	ensuite bathroom
Appliances	Dryer, Garage Control, Hood Fan, Refrigerator, Stove-Electric, Washer, Window Coverings
Heating	Hot Water, Natural Gas
# of Stories	24
Stories	1
Has Basement	Yes
Basement	None, No Basement

Exterior

Exterior	Concrete, Composition
----------	-----------------------

Exterior Features	Golf Nearby, Public Transportation, River Valley View, Schools, Shopping Nearby, View City, View Downtown, Private Park Access
Roof	Tar & Gravel
Construction	Concrete, Composition
Foundation	Concrete Perimeter

Additional Information

Date Listed	June 12th, 2025
Days on Market	4
Zoning	Zone 12
Condo Fee	\$1,024

DATA IS DEEMED RELIABLE BUT IS NOT GUARANTEED ACCURATE BY THE REALTORS® ASSOCIATION OF EDMONTON. COPYRIGHT 2025 BY THE REALTORS® ASSOCIATION OF EDMONTON. ALL RIGHTS RESERVED. Trademarks are owned or controlled by the Canadian Real Estate Association (CREA) and identify real estate professionals who are members of CREA (REALTOR®, REALTORS®) and/or the quality of services they provide (MLS®, Multiple Listing Service®)

Listing information last updated on June 16th, 2025 at 4:17am MDT