

\$409,900 - 823 Johns Close, Edmonton

MLS® #E4442751

\$409,900

3 Bedroom, 2.00 Bathroom, 1,074 sqft

Single Family on 0.00 Acres

Jackson Heights, Edmonton, AB

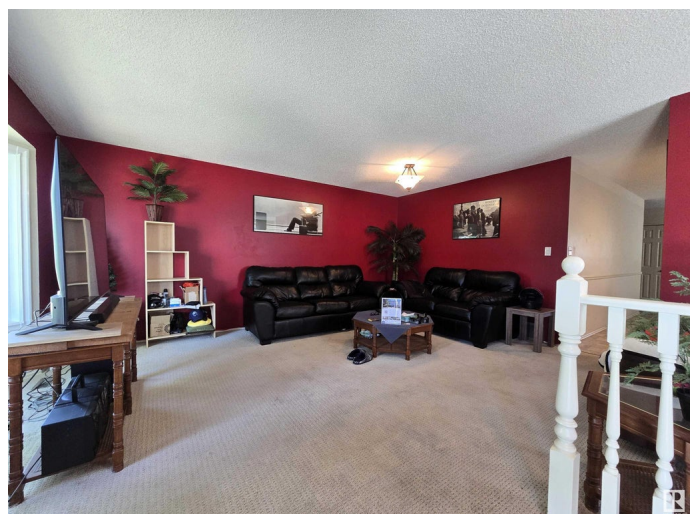
Tucked away on a quiet cul-de-sac in Jackson Heights, this charming 3 bedroom, 2 bathroom bungalow offers incredible value in one of the area's most desirable locations. The open concept kitchen with classic oak cabinetry flows into a spacious dining area with direct access to a covered deck, creating a perfect setup for indoor-outdoor living. The primary bedroom features dual closets, second bedroom & a 4 pc bath completing the main floor. The fully finished basement offers a generous rec room with gas fireplace, third bedroom, 4 pc bath, & large laundry/storage area. The south-facing backyard is ideal for relaxing or entertaining, with two decks, garden beds, and an oversized heated detached garage. Extensive upgrades include: vinyl windows, high-efficiency furnace, heat pump, A/C, tankless hot water, solar panels, water softener & reverse osmosis. Close to Mill Creek Ravine, schools, parks, shopping, transit & Whitemud Dr. A little cosmetic updating will make this a fantastic starter/investment home.

Built in 1992

Essential Information

MLS® # E4442751

Price \$409,900



Bedrooms	3
Bathrooms	2.00
Full Baths	2
Square Footage	1,074
Acres	0.00
Year Built	1992
Type	Single Family
Sub-Type	Detached Single Family
Style	Bungalow
Status	Active

Community Information

Address	823 Johns Close
Area	Edmonton
Subdivision	Jackson Heights
City	Edmonton
County	ALBERTA
Province	AB
Postal Code	T6L 6P2

Amenities

Amenities	Air Conditioner, Deck, Patio, Smart/Program. Thermostat, Vinyl Windows, Solar Equipment
Parking Spaces	2
Parking	Heated, Over Sized, Single Garage Detached

Interior

Appliances	Dishwasher-Built-In, Dryer, Garage Control, Garage Opener, Hood Fan, Refrigerator, Stove-Electric, Vacuum System Attachments, Vacuum Systems, Washer
Heating	Forced Air-1, Natural Gas
Fireplace	Yes
Fireplaces	Tile Surround
Stories	2
Has Basement	Yes
Basement	Full, Finished

Exterior

Exterior	Wood, Vinyl
----------	-------------

Exterior Features	Back Lane, Fenced, Flat Site, Landscaped, Park/Reserve, Paved Lane, Playground Nearby, Schools, Shopping Nearby
Roof	Asphalt Shingles
Construction	Wood, Vinyl
Foundation	Concrete Perimeter

School Information

Elementary	John Paul I/St. Kateri
Middle	Father Michael Troy/Rossly
High	J H Picard/Austin O'Brien

Additional Information

Date Listed	June 17th, 2025
Days on Market	16
Zoning	Zone 29

DATA IS DEEMED RELIABLE BUT IS NOT GUARANTEED ACCURATE BY THE REALTORS® ASSOCIATION OF EDMONTON. COPYRIGHT 2025 BY THE REALTORS® ASSOCIATION OF EDMONTON. ALL RIGHTS RESERVED. Trademarks are owned or controlled by the Canadian Real Estate Association (CREA) and identify real estate professionals who are members of CREA (REALTOR®, REALTORS®) and/or the quality of services they provide (MLS®, Multiple Listing Service®)

Listing information last updated on July 3rd, 2025 at 10:48am MDT