

\$352,500 - 402 10728 82 Avenue, Edmonton

MLS® #E4443459

\$352,500

2 Bedroom, 1.50 Bathroom, 1,163 sqft
Condo / Townhouse on 0.00 Acres

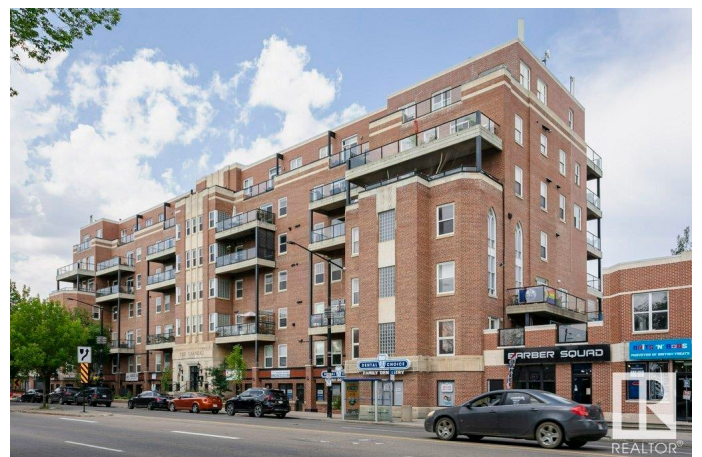
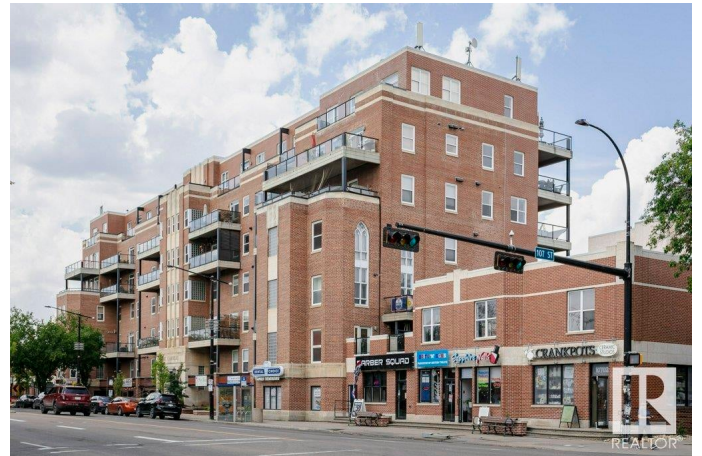
Garneau, Edmonton, AB

Historic Charm Meets Modern Living on Whyte Ave! Step into a piece of history with this large two-level condo in a coveted 1912 brick building, right in the heart of vibrant Garneau. This two-bedroom, 1.5-bathroom unit blends heritage charm with contemporary comfort, featuring soaring ceilings, exposed brick accents, and expansive windows that flood the space with natural light and offer prime views of Whyte Avenue. Perfectly positioned in one of Edmonton's most walkable neighborhoods, you're just steps from cafés, boutiques, theatres, the University, and nightlife. Enjoy the ease of central A/C, two dedicated parking stalls, and an unbeatable location in the city's cultural hub. Love character? Crave convenience? This is the home for you! Don't miss your chance to own a rare gem in one of Edmonton's most iconic buildings.

Built in 1948

Essential Information

MLS® #	E4443459
Price	\$352,500
Bedrooms	2
Bathrooms	1.50
Full Baths	1
Half Baths	1



Square Footage	1,163
Acres	0.00
Year Built	1948
Type	Condo / Townhouse
Sub-Type	Lowrise Apartment
Style	2 Storey
Status	Active

Community Information

Address	402 10728 82 Avenue
Area	Edmonton
Subdivision	Garneau
City	Edmonton
County	ALBERTA
Province	AB
Postal Code	T6E 6P5

Amenities

Amenities	Air Conditioner, Ceiling 9 ft., Detectors Smoke, No Smoking Home, Parking-Extra, Patio, Secured Parking, Security Door, Storage-In-Suite
Parking Spaces	2
Parking	Double Indoor, Heated, Underground

Interior

Interior Features	ensuite bathroom
Appliances	Air Conditioning-Central, Dishwasher-Built-In, Dryer, Microwave Hood Fan, Refrigerator, Stove-Countertop Electric, Washer, TV Wall Mount
Heating	Forced Air-1, Natural Gas
Fireplace	Yes
Fireplaces	Mantel
# of Stories	5
Stories	2
Has Basement	Yes
Basement	None, No Basement

Exterior

Exterior	Brick
Exterior Features	Back Lane, Paved Lane, Playground Nearby, Public Swimming Pool, Public Transportation, Schools, Shopping Nearby, View City

Roof	Tar & Gravel
Construction	Brick
Foundation	Concrete Perimeter

Additional Information

Date Listed	June 20th, 2025
Days on Market	5
Zoning	Zone 15
Condo Fee	\$693

DATA IS DEEMED RELIABLE BUT IS NOT GUARANTEED ACCURATE BY THE REALTORS® ASSOCIATION OF EDMONTON. COPYRIGHT 2025 BY THE REALTORS® ASSOCIATION OF EDMONTON. ALL RIGHTS RESERVED. Trademarks are owned or controlled by the Canadian Real Estate Association (CREA) and identify real estate professionals who are members of CREA (REALTOR®, REALTORS®) and/or the quality of services they provide (MLS®, Multiple Listing Service®)

Listing information last updated on June 25th, 2025 at 7:47pm MDT