

\$374,900 - 50 Hearthstone, Edmonton

MLS® #E4444113

\$374,900

3 Bedroom, 3.50 Bathroom, 1,473 sqft

Condo / Townhouse on 0.00 Acres

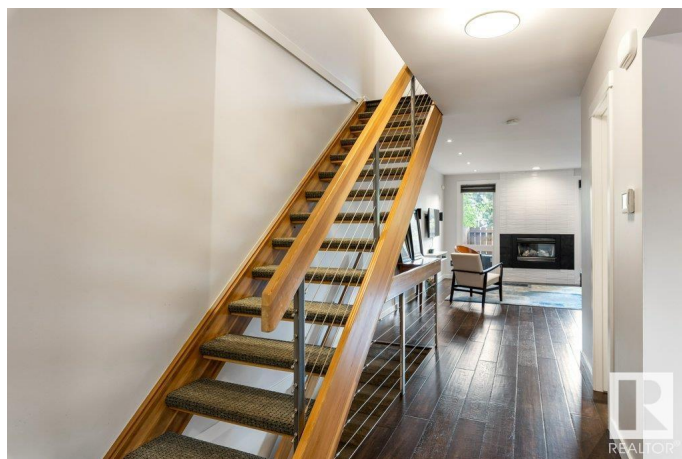
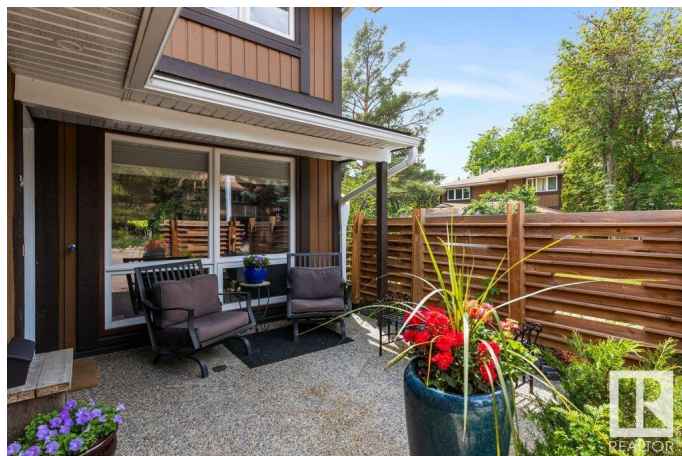
Brander Gardens, Edmonton, AB

Nestled in the tranquil Riverbend community of Brander Gardens, this end unit townhome blends modern updates with natural charm. Just steps from the scenic river valley trails, Fort Edmonton Park, and the footbridge, it offers the perfect retreat after a day of outdoor adventure. Inside, you're welcomed by a cozy fireplace in the living room and a warm, inviting dining space. The beautifully renovated kitchen features SS appliances and built-in microwave, plus ample cabinetry and counter space. Upstairs, find three spacious bedrooms, 4-piece ensuite, and a 4-piece primary bath. The finished basement includes a family room, 3-piece bath, laundry, and generous storage space. Complete with a single attached garage for convenience. Ideally located near top-rated schools, parks, shopping, transit, and with quick access to Whitemud Drive and the Henday, this home offers comfort, style, and unbeatable location.

Built in 1976

Essential Information

MLS® #	E4444113
Price	\$374,900
Bedrooms	3
Bathrooms	3.50
Full Baths	3



Half Baths	1
Square Footage	1,473
Acres	0.00
Year Built	1976
Type	Condo / Townhouse
Sub-Type	Townhouse
Style	2 Storey
Status	Active

Community Information

Address	50 Hearthstone
Area	Edmonton
Subdivision	Brander Gardens
City	Edmonton
County	ALBERTA
Province	AB
Postal Code	T6H 5E5

Amenities

Amenities	Air Conditioner, Parking-Visitor
Parking	Parking Pad Cement/Paved, Single Garage Attached

Interior

Interior Features	ensuite bathroom
Appliances	Air Conditioning-Central, Dishwasher-Built-In, Dryer, Garage Control, Garage Opener, Hood Fan, Oven-Microwave, Refrigerator, Stove-Electric, Washer, Window Coverings, TV Wall Mount
Heating	Forced Air-1, Natural Gas
Fireplace	Yes
Fireplaces	Insert
Stories	3
Has Basement	Yes
Basement	Full, Finished

Exterior

Exterior	Wood, Brick, Stucco
Exterior Features	Corner Lot, Fenced, Flat Site, Landscaped, Playground Nearby, Private Setting, Schools, Shopping Nearby, Ski Hill Nearby, See Remarks
Roof	Asphalt Shingles

Construction	Wood, Brick, Stucco
Foundation	Concrete Perimeter

Additional Information

Date Listed	June 24th, 2025
Days on Market	1
Zoning	Zone 14
Condo Fee	\$486

DATA IS DEEMED RELIABLE BUT IS NOT GUARANTEED ACCURATE BY THE REALTORS® ASSOCIATION OF EDMONTON. COPYRIGHT 2025 BY THE REALTORS® ASSOCIATION OF EDMONTON. ALL RIGHTS RESERVED.Trademarks are owned or controlled by the Canadian Real Estate Association (CREA) and identify real estate professionals who are members of CREA (REALTOR®, REALTORS®) and/or the quality of services they provide (MLS®, Multiple Listing Service®)

Listing information last updated on June 25th, 2025 at 12:18pm MDT