

## \$149,900 - 222 12838 65 Street, Edmonton

MLS® #E4444684

**\$149,900**

2 Bedroom, 1.00 Bathroom, 805 sqft

Condo / Townhouse on 0.00 Acres

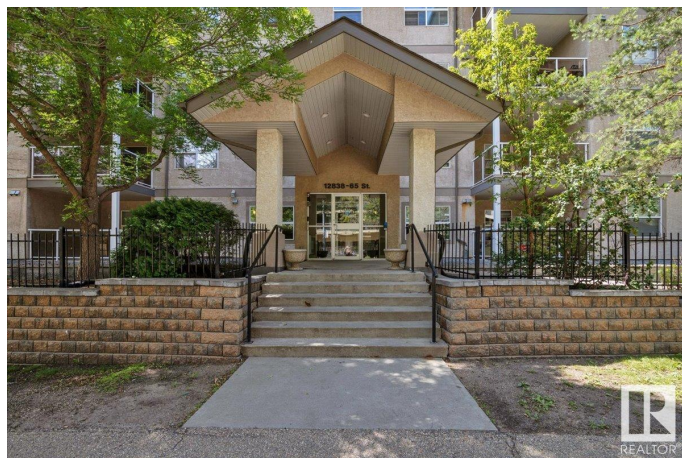
Belvedere, Edmonton, AB

This beautifully updated 2-bedroom condo in Belvedere offers modern living in a safe, well-maintained building. Featuring upgraded flooring, fresh paint, and a stylish kitchen with quartz countertops and stainless steel appliances, the space is both functional and inviting. The layout includes two generous bedrooms, a sleek bathroom, and a private balcony. Additional highlights include underground heated parking and access to an on-site gym. Conveniently located near the LRT, shopping, schools, and major roadways, ideal for first-time buyers, downsizers, or investors looking for a turnkey property.

Built in 2004

### Essential Information

MLS® #	E4444684
Price	\$149,900
Bedrooms	2
Bathrooms	1.00
Full Baths	1
Square Footage	805
Acres	0.00
Year Built	2004
Type	Condo / Townhouse
Sub-Type	Lowrise Apartment
Style	Single Level Apartment



Status	Active
--------	--------

### Community Information

Address	222 12838 65 Street
Area	Edmonton
Subdivision	Belvedere
City	Edmonton
County	ALBERTA
Province	AB
Postal Code	T5A 5H3

### Amenities

Amenities	Carbon Monoxide Detectors, Exercise Room, No Animal Home, No Smoking Home, Parking-Visitor
Parking	Heated, Underground

### Interior

Appliances	Dishwasher - Energy Star, Garage Opener, Microwave Hood Fan, Refrigerator, Stacked Washer/Dryer, Stove-Electric
Heating	Hot Water, Water
# of Stories	4
Stories	1
Has Basement	Yes
Basement	None, No Basement

### Exterior

Exterior	Wood, Stucco
Exterior Features	Schools, Shopping Nearby
Roof	Asphalt Shingles
Construction	Wood, Stucco
Foundation	Concrete Perimeter

### Additional Information

Date Listed	June 27th, 2025
Days on Market	58
Zoning	Zone 02
Condo Fee	\$524

DATA IS DEEMED RELIABLE BUT IS NOT GUARANTEED ACCURATE BY THE REALTORS® ASSOCIATION OF EDMONTON. COPYRIGHT 2025 BY THE REALTORS® ASSOCIATION OF EDMONTON. ALL RIGHTS RESERVED. Trademarks are owned or controlled by the Canadian Real Estate Association (CREA) and identify real

estate professionals who are members of CREA (REALTOR®®, REALTORS®®) and/or the quality of services they provide (MLS®®, Multiple Listing Service®®)

Listing information last updated on August 24th, 2025 at 1:47pm MDT