

## \$189,900 - 110 13710 150 Avenue, Edmonton

MLS® #E4445348

**\$189,900**

2 Bedroom, 2.00 Bathroom, 890 sqft

Condo / Townhouse on 0.00 Acres

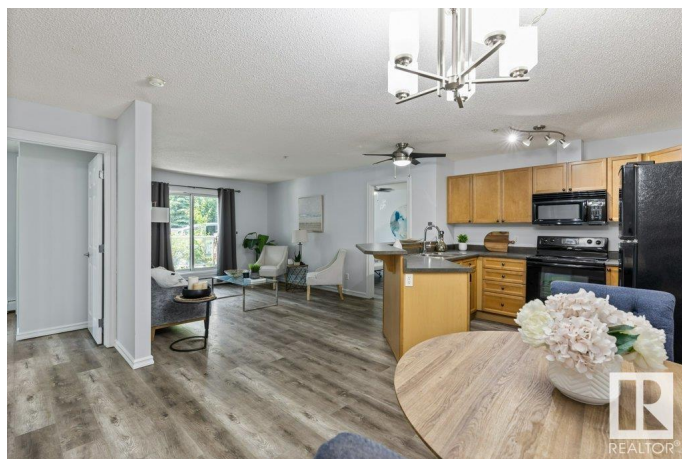
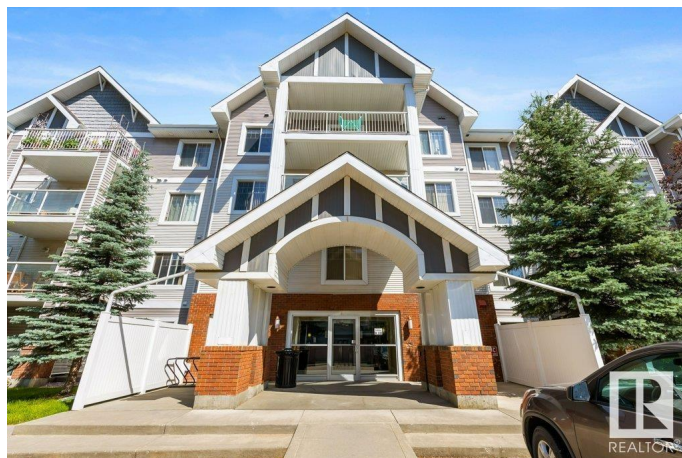
Cumberland, Edmonton, AB

This well-laid-out 2 bedroom, 2 bathroom unit features fresh paint and stylish vinyl plank flooring throughout. The spacious kitchen includes ample cabinet space, a cozy dining nook, and a raised eating barâ€”perfect for everyday meals or entertaining guests. The primary bedroom boasts a walk-through closet and a luxurious 3-piece ensuite, offering comfort and convenience. Enjoy the added benefits of in-suite laundry and a private patio just off the living roomâ€”ideal for relaxing or hosting friends. Youâ€™ll also appreciate the titled underground heated parking stall, providing comfort year-round. Building amenities include an exercise room, giving you the convenience of a workout space just steps from your door. Located in the quiet, family-friendly neighborhood of Cumberland, with quick access to Anthony Henday Drive and close proximity to parks, schools, shopping, and other essential amenities.

Built in 2006

### Essential Information

MLS® #	E4445348
Price	\$189,900
Bedrooms	2
Bathrooms	2.00
Full Baths	2



Square Footage	890
Acres	0.00
Year Built	2006
Type	Condo / Townhouse
Sub-Type	Lowrise Apartment
Style	Single Level Apartment
Status	Active

### Community Information

Address	110 13710 150 Avenue
Area	Edmonton
Subdivision	Cumberland
City	Edmonton
County	ALBERTA
Province	AB
Postal Code	T6V 0B2

### Amenities

Amenities	Parking-Visitor, Patio, Secured Parking, Security Door, Vinyl Windows
Parking Spaces	1
Parking	Underground

### Interior

Interior Features	ensuite bathroom
Appliances	Dishwasher-Built-In, Dryer, Microwave Hood Fan, Refrigerator, Stove-Electric, Washer
Heating	Baseboard, Natural Gas
# of Stories	4
Stories	1
Has Basement	Yes
Basement	None, No Basement

### Exterior

Exterior	Wood, Brick, Vinyl
Exterior Features	Flat Site, Landscaped, Playground Nearby, Public Transportation, Schools, Shopping Nearby
Roof	Asphalt Shingles
Construction	Wood, Brick, Vinyl
Foundation	Concrete Perimeter

**Additional Information**

Date Listed	July 2nd, 2025
Days on Market	9
Zoning	Zone 27
Condo Fee	\$622

DATA IS DEEMED RELIABLE BUT IS NOT GUARANTEED ACCURATE BY THE REALTORS® ASSOCIATION OF EDMONTON. COPYRIGHT 2025 BY THE REALTORS® ASSOCIATION OF EDMONTON. ALL RIGHTS RESERVED.Trademarks are owned or controlled by the Canadian Real Estate Association (CREA) and identify real estate professionals who are members of CREA (REALTOR®, REALTORS®) and/or the quality of services they provide (MLS®, Multiple Listing Service®)

Listing information last updated on July 11th, 2025 at 2:32pm MDT