

\$450,000 - 76 Larose Drive, St. Albert

MLS® #E4446649

\$450,000

3 Bedroom, 1.50 Bathroom, 1,202 sqft

Single Family on 0.00 Acres

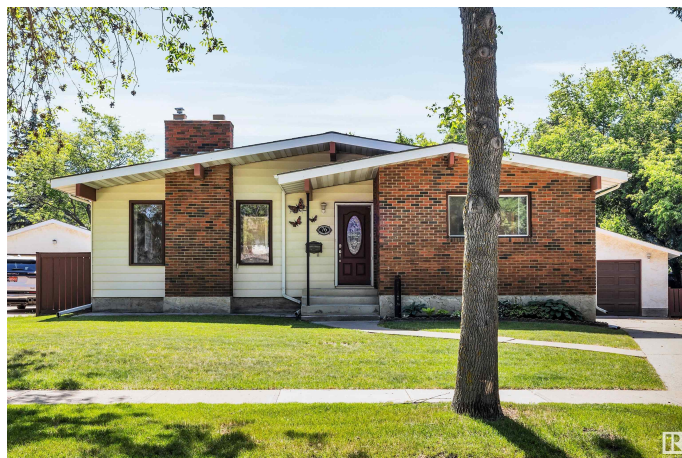
Lacombe Park, St. Albert, AB

Fantastic 1200 sq. ft. open beam bungalow situated on a large pie-shaped lot in Lacombe Park! Recently renovated kitchen with full height white cabinetry, granite countertops, coffee bar and stainless steel appliances. The living room has a vaulted ceiling and a gas fireplace. Renovated main bathroom with a walk-in tub/shower. Three bedrooms up including a spacious primary with 2 pce ensuite. The basement is finished with a large rec room, a built-in murphy bed, laundry area and plenty of storage. Newer furnace and HWT. Double detached garage. The BIG backyard is well maintained, has a deck with a gazebo and has plenty of space for the kids or dog to run around. Central A/C. Walking distance to all levels of schooling and close to all amenities!

Built in 1975

Essential Information

MLS® #	E4446649
Price	\$450,000
Bedrooms	3
Bathrooms	1.50
Full Baths	1
Half Baths	1
Square Footage	1,202
Acres	0.00



Year Built	1975
Type	Single Family
Sub-Type	Detached Single Family
Style	Bungalow
Status	Active

Community Information

Address	76 Larose Drive
Area	St. Albert
Subdivision	Lacombe Park
City	St. Albert
County	ALBERTA
Province	AB
Postal Code	T8N 2M8

Amenities

Amenities	Air Conditioner, Deck, Detectors Smoke, No Animal Home, No Smoking Home
Parking Spaces	4
Parking	Double Garage Detached

Interior

Interior Features	ensuite bathroom
Appliances	Air Conditioning-Central, Dishwasher-Built-In, Dryer, Freezer, Garage Control, Garage Opener, Hood Fan, Refrigerator, Stove-Electric, Washer, Window Coverings, See Remarks, TV Wall Mount
Heating	Forced Air-1, Natural Gas
Fireplace	Yes
Fireplaces	Freestanding, Insert
Stories	2
Has Basement	Yes
Basement	Full, Finished

Exterior

Exterior	Wood, Brick, Metal
Exterior Features	Fenced, Flat Site, Landscaped, Playground Nearby, Public Transportation, Schools, Shopping Nearby, Treed Lot
Roof	Asphalt Shingles
Construction	Wood, Brick, Metal

Foundation Concrete Perimeter

Additional Information

Date Listed July 9th, 2025

Days on Market 2

Zoning Zone 24

DATA IS DEEMED RELIABLE BUT IS NOT GUARANTEED ACCURATE BY THE REALTORS® ASSOCIATION OF EDMONTON. COPYRIGHT 2025 BY THE REALTORS® ASSOCIATION OF EDMONTON. ALL RIGHTS RESERVED.Trademarks are owned or controlled by the Canadian Real Estate Association (CREA) and identify real estate professionals who are members of CREA (REALTOR®, REALTORS®) and/or the quality of services they provide (MLS®, Multiple Listing Service®)

Listing information last updated on July 11th, 2025 at 1:47pm MDT