

\$92,000 - 11 10148 118 Street, Edmonton

MLS® #E4453909

\$92,000

1 Bedroom, 1.00 Bathroom, 650 sqft

Condo / Townhouse on 0.00 Acres

WÃ@hkwÃªntÃ´win, Edmonton, AB

Wonderfully located within walking distance to Edmonton's highly coveted Brewery district which features high end restaurants, a state of the art fitness centre, medical centre and drug store, bakeries and more! You're also minutes away from the electric ice district, Grant MacEwan, and Jasper ave! Your unit is one of the brightest and most spacious in the entire complex featuring large windows for natural sunlight throughout and tastefully chosen finishes to maximize brightness! Upon entering you're greeted by a stunning kitchen with a full set of appliances, beautiful cabinets and ample counter space! Your kitchen opens up to a large living room featuring a lovely fire place that's perfect for entertaining! Your gigantic bedroom includes both a regular closet and a walk in closet, as well as a 4 piece ensuite bathroom! Your unit also includes a gorgeous private patio area, secure heated underground parking, and insuite laundry for your convenience! Perfect for students, young professionals or investors!

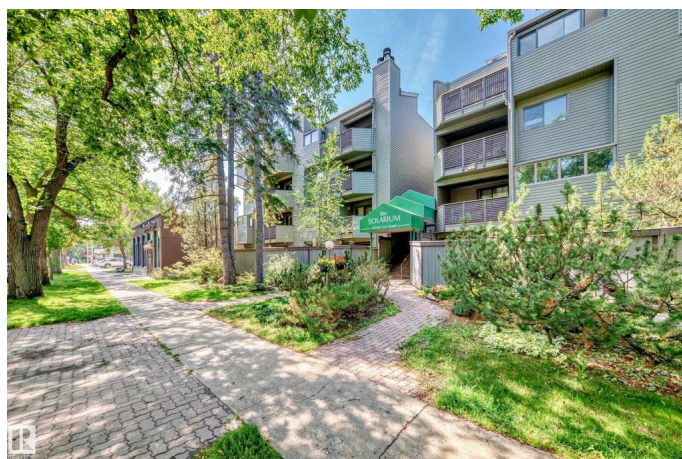
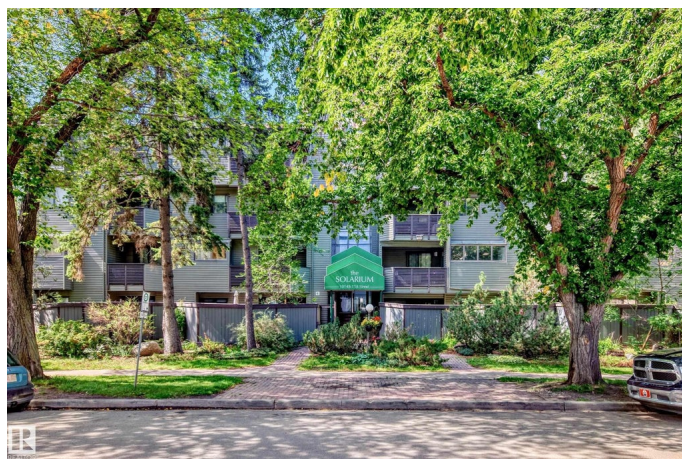
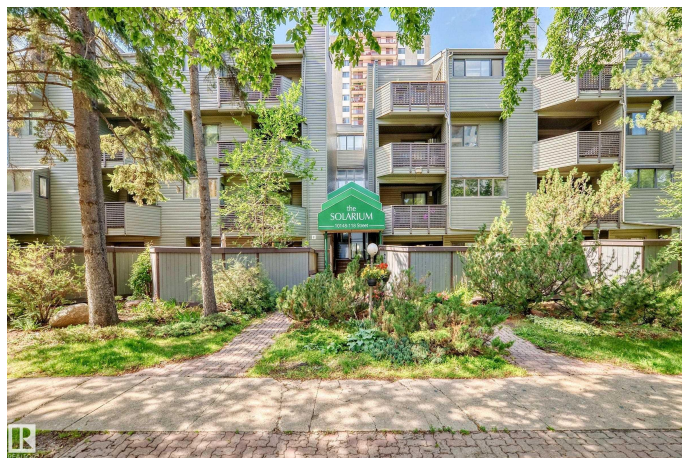
Built in 1979

Essential Information

MLS® # E4453909

Price \$92,000

Bedrooms 1



Bathrooms	1.00
Full Baths	1
Square Footage	650
Acres	0.00
Year Built	1979
Type	Condo / Townhouse
Sub-Type	Lowrise Apartment
Style	Multi Level Apartment
Status	Active

Community Information

Address	11 10148 118 Street
Area	Edmonton
Subdivision	W&hkw&ant&win
City	Edmonton
County	ALBERTA
Province	AB
Postal Code	T5K 1Y4

Amenities

Amenities	Secured Parking, Security Door
Parking	Heated, Underground

Interior

Interior Features	ensuite bathroom
Appliances	Dishwasher-Built-In, Dryer, Refrigerator, Stove-Electric, Washer, Window Coverings
Heating	Hot Water, Natural Gas
# of Stories	3
Stories	4
Has Basement	Yes
Basement	None, No Basement

Exterior

Exterior	Wood, Stucco, Vinyl
Exterior Features	Playground Nearby, Public Transportation, Schools, Shopping Nearby, See Remarks
Roof	Asphalt Shingles
Construction	Wood, Stucco, Vinyl

Foundation Concrete Perimeter

Additional Information

Date Listed August 20th, 2025
Days on Market 1
Zoning Zone 12
Condo Fee \$626

DATA IS DEEMED RELIABLE BUT IS NOT GUARANTEED ACCURATE BY THE REALTORS® ASSOCIATION OF EDMONTON. COPYRIGHT 2025 BY THE REALTORS® ASSOCIATION OF EDMONTON. ALL RIGHTS RESERVED.Trademarks are owned or controlled by the Canadian Real Estate Association (CREA) and identify real estate professionals who are members of CREA (REALTOR®, REALTORS®) and/or the quality of services they provide (MLS®, Multiple Listing Service®)
Listing information last updated on August 21st, 2025 at 5:02pm MDT