

\$479,900 - 9235 Scott Lane, Edmonton

MLS® #E4454023

\$479,900

4 Bedroom, 3.50 Bathroom, 1,477 sqft

Single Family on 0.00 Acres

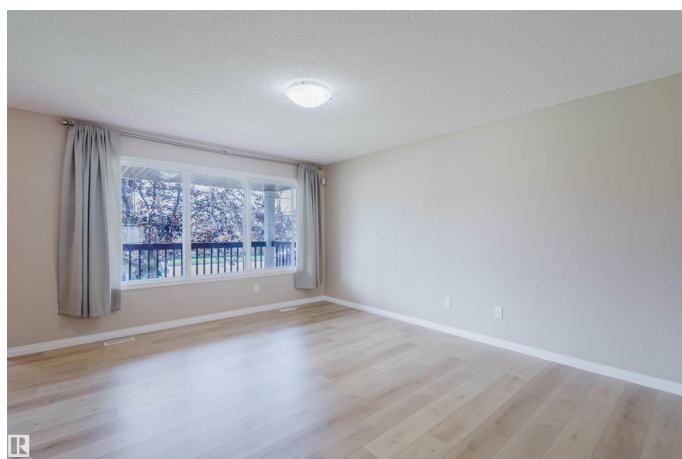
South Terwillegar, Edmonton, AB

Welcome to this nicely upgraded 2 storey home in highly sought-after community of South Terwillegar! Located on a quiet street, this large 1477 sqft home welcomes you with a beautiful veranda. Main floor features a large living room w/ new vinyl flooring, open kitchen w/plenty of cabinets, counter space, island & new appliances (D/W & Microwave Hood Fan-2025), spacious dining area, 2-pc bath & laundry. Upstairs has BRAND NEW carpet & primary suite w/ a 4-pc ensuite and W/I closet, TWO more good sized brms and 4 pc bath. Basement is partially finished w/ a DEN, a 4th bdrm & a 3pc bath. Newer paint and new hot water tank (2024). Low maintenance backyard. 20'x20' oversized detached garage and storage shed. Close to great schools, shopping, Terwillegar Rec Centre, and all other amenities.

Built in 2006

Essential Information

MLS® #	E4454023
Price	\$479,900
Bedrooms	4
Bathrooms	3.50
Full Baths	3
Half Baths	1
Square Footage	1,477



Acres	0.00
Year Built	2006
Type	Single Family
Sub-Type	Detached Single Family
Style	2 Storey
Status	Active

Community Information

Address	9235 Scott Lane
Area	Edmonton
Subdivision	South Terwillegar
City	Edmonton
County	ALBERTA
Province	AB
Postal Code	T6R 0E6

Amenities

Amenities	On Street Parking, Deck, Detectors Smoke, Hot Water Natural Gas, Vaulted Ceiling
Parking Spaces	4
Parking	Double Garage Detached

Interior

Interior Features	ensuite bathroom
Appliances	Dishwasher-Built-In, Dryer, Garage Control, Garage Opener, Microwave Hood Fan, Refrigerator, Storage Shed, Stove-Electric, Washer, Window Coverings
Heating	Forced Air-1, Natural Gas
Stories	2
Has Basement	Yes
Basement	Full, Partially Finished

Exterior

Exterior	Wood, Vinyl
Exterior Features	Back Lane, Fenced, Flat Site, Landscaped, Playground Nearby, Public Transportation, Schools, Shopping Nearby
Roof	Asphalt Shingles
Construction	Wood, Vinyl
Foundation	Concrete Perimeter

School Information

Elementary	Esther Starkman School
Middle	Esther Starkman School
High	Lillian Osborne School

Additional Information

Date Listed	August 21st, 2025
Days on Market	1
Zoning	Zone 14

DATA IS DEEMED RELIABLE BUT IS NOT GUARANTEED ACCURATE BY THE REALTORS® ASSOCIATION OF EDMONTON. COPYRIGHT 2025 BY THE REALTORS® ASSOCIATION OF EDMONTON. ALL RIGHTS RESERVED.Trademarks are owned or controlled by the Canadian Real Estate Association (CREA) and identify real estate professionals who are members of CREA (REALTOR®, REALTORS®) and/or the quality of services they provide (MLS®, Multiple Listing Service®)

Listing information last updated on August 21st, 2025 at 10:47pm MDT