

\$749,900 - 4322 Hawthorn Landing Landing, Edmonton

MLS® #E4454870

\$749,900

5 Bedroom, 3.50 Bathroom, 2,196 sqft

Single Family on 0.00 Acres

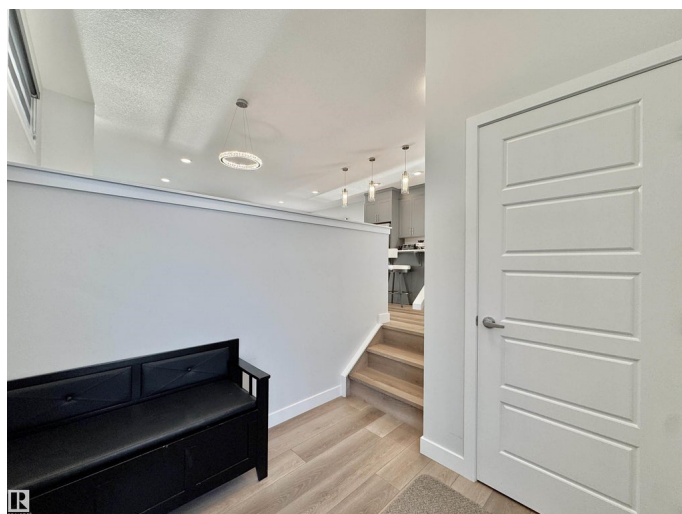
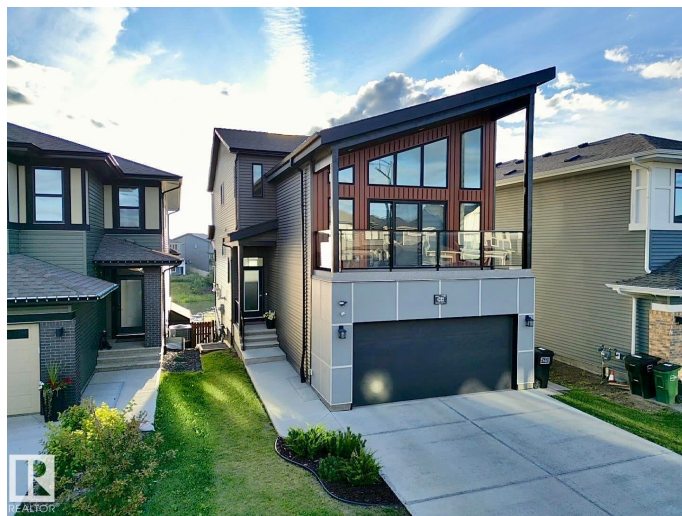
The Orchards At Ellerslie, Edmonton, AB

Must-see fully upgraded Brookfield Hudson model in show-home condition. This 2-storey home features 2,195 square feet, central air, and a fully finished walk-out basement. The sunlit main floor features a spacious open-concept great room, chef-style kitchen with upgraded cabinetry, electric fireplace, stainless steel appliances and a generous pantry. Upstairs offers a vaulted bonus room, 4 generous bedrooms, a full bath and laundry room. The luxurious primary boasts a spa-like ensuite with soaker tub, stand-up shower, his-and-hers sinks, and a walk-in closet. The glass-railed covered deck and lower patio overlook a scenic walking trail with a pond view, west facing yard with firepit, raised garden beds with wood storage, hot tub, and a garden shed for storage. This quiet location is minutes from schools, walking trails, the Orchards Residents Association, and easy access to the Anthony Henday.

Built in 2021

Essential Information

MLS® #	E4454870
Price	\$749,900
Bedrooms	5
Bathrooms	3.50
Full Baths	3



Half Baths	1
Square Footage	2,196
Acres	0.00
Year Built	2021
Type	Single Family
Sub-Type	Detached Single Family
Style	4 Level Split
Status	Active

Community Information

Address	4322 Hawthorn Landing Landing
Area	Edmonton
Subdivision	The Orchards At Ellerslie
City	Edmonton
County	ALBERTA
Province	AB
Postal Code	T6X 2Y9

Amenities

Amenities	Air Conditioner, Ceiling 9 ft., Closet Organizers, Deck, Fire Pit, Hot Tub, No Smoking Home, Parking-Extra, Patio, Vaulted Ceiling, Walkout Basement
Parking	Double Garage Attached
Is Waterfront	Yes

Interior

Interior Features	ensuite bathroom
Appliances	Dishwasher-Built-In, Dryer, Hood Fan, Refrigerator, Stove-Electric, Vacuum Systems, Washer, Window Coverings
Heating	Forced Air-1, Natural Gas
Fireplace	Yes
Fireplaces	Heatilator/Fan, Mantel
Stories	4
Has Basement	Yes
Basement	Full, Finished

Exterior

Exterior	Wood, Hardie Board Siding
Exterior Features	Backs Onto Lake, Fenced, Low Maintenance Landscape, No Back Lane,

	Playground Nearby, Public Swimming Pool, Public Transportation, Schools
Roof	Asphalt Shingles
Construction	Wood, Hardie Board Siding
Foundation	Concrete Perimeter

Additional Information

Date Listed	August 27th, 2025
Days on Market	1
Zoning	Zone 53
HOA Fees	425
HOA Fees Freq.	Annually

DATA IS DEEMED RELIABLE BUT IS NOT GUARANTEED ACCURATE BY THE REALTORS® ASSOCIATION OF EDMONTON. COPYRIGHT 2025 BY THE REALTORS® ASSOCIATION OF EDMONTON. ALL RIGHTS RESERVED. Trademarks are owned or controlled by the Canadian Real Estate Association (CREA) and identify real estate professionals who are members of CREA (REALTOR®, REALTORS®) and/or the quality of services they provide (MLS®, Multiple Listing Service®)

Listing information last updated on August 28th, 2025 at 2:17am MDT