

Courtesy Of Kyle F Vidic Of Exp Realty

# \$209,999 - 110 10518 113 Street, Edmonton

MLS® #E4458936

**\$209,999**

1 Bedroom, 2.00 Bathroom, 826 sqft  
Condo / Townhouse on 0.00 Acres

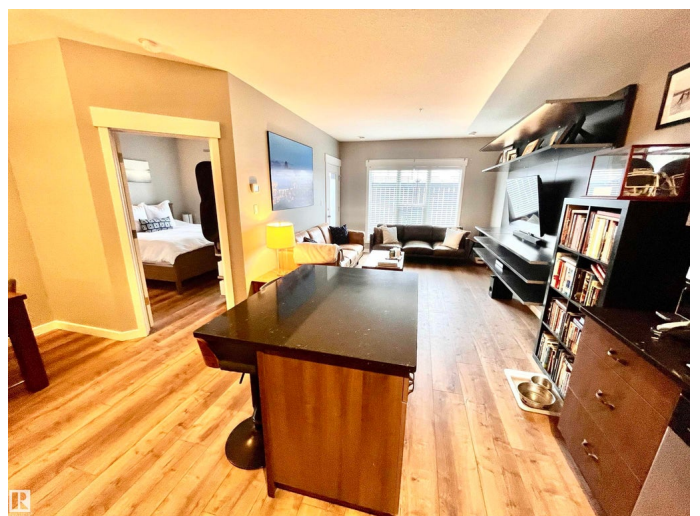
Queen Mary Park, Edmonton, AB

The Maxx! This spacious 1 bed + den, 2 bath main-floor condo sits steps from Oliver Square and perfectly between the Brewery District and ICE District. An open-concept layout with 9' ceilings features a stylish kitchen with quartz countertops, tile backsplash, centre island, and plenty of cabinet space. The bright living room flows to a huge west-facing patio—ideal for BBQs and evening sun. The primary bedroom offers excellent storage and a 3-pc ensuite. A versatile den is perfect for a home office or extra storage. The oversized 4-pc main bath connects to your in-suite laundry with additional storage. Thoughtful built-ins maximize space throughout. Titled underground parking included. Walk to shops, restaurants, and transit—urban convenience with room to breathe. Move-in ready and easy to show.

Built in 2010

## Essential Information

MLS® #	E4458936
Price	\$209,999
Bedrooms	1
Bathrooms	2.00
Full Baths	2
Square Footage	826
Acres	0.00



Year Built	2010
Type	Condo / Townhouse
Sub-Type	Lowrise Apartment
Style	Single Level Apartment
Status	Active

### **Community Information**

Address	110 10518 113 Street
Area	Edmonton
Subdivision	Queen Mary Park
City	Edmonton
County	ALBERTA
Province	AB
Postal Code	T5H 0C6

### **Amenities**

Amenities	Air Conditioner, No Smoking Home, Storage-In-Suite
Parking Spaces	1
Parking	Underground

### **Interior**

Interior Features	ensuite bathroom
Appliances	Dishwasher-Built-In, Dryer, Refrigerator, Stove-Electric, Washer
Heating	Heat Pump, Natural Gas
# of Stories	6
Stories	1
Has Basement	Yes
Basement	None, No Basement

### **Exterior**

Exterior	Steel, Brick, Stucco
Exterior Features	Back Lane, Public Transportation, Shopping Nearby, View Downtown
Roof	EPDM Membrane
Construction	Steel, Brick, Stucco
Foundation	Concrete Perimeter

### **Additional Information**

Date Listed	September 22nd, 2025
Days on Market	22

Zoning	Zone 08
Condo Fee	\$461

DATA IS DEEMED RELIABLE BUT IS NOT GUARANTEED ACCURATE BY THE REALTORS® ASSOCIATION OF EDMONTON. COPYRIGHT 2025 BY THE REALTORS® ASSOCIATION OF EDMONTON. ALL RIGHTS RESERVED. Trademarks are owned or controlled by the Canadian Real Estate Association (CREA) and identify real estate professionals who are members of CREA (REALTOR®, REALTORS®) and/or the quality of services they provide (MLS®, Multiple Listing Service®)

Listing information last updated on October 14th, 2025 at 3:17pm MDT