

Courtesy Of Nadia Glavonjic Of Sterling Real Estate

\$649,900 - 22 Sydwyck Circle, Spruce Grove

MLS® #E4461947

\$649,900

3 Bedroom, 3.00 Bathroom, 2,378 sqft
Single Family on 0.00 Acres

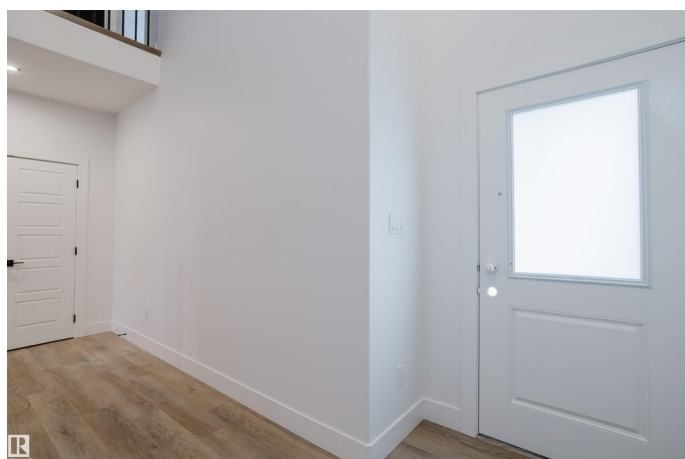
Fenwyck, Spruce Grove, AB

Backing onto a peaceful park in Spruce Grove's prestigious Fenwyck community, this beautifully designed corner-lot home blends luxury, functionality, and architectural flair. A rare triple garage with dedicated RV parking offers exceptional convenience, while the side entrance adds flexibility for future suite potential or private access. Step into the grand open-to-above foyer, where soaring ceilings and natural light create an impressive welcome. The main floor features a versatile den and full bathroom—ideal for guests, remote work, or multigenerational living. The spacious living area flows seamlessly into the kitchen and dining spaces, designed for comfort and entertaining. Upstairs, three generous bedrooms are complemented by a large bonus room perfect for family movie nights, a play area, or a private retreat. Well-appointed bathrooms and thoughtful design details elevate comfort throughout. Outside, a generous rear deck overlooks the tranquil park setting, ideal for relaxing evenings.

Built in 2025

Essential Information

MLS® #	E4461947
Price	\$649,900



Bedrooms	3
Bathrooms	3.00
Full Baths	3
Square Footage	2,378
Acres	0.00
Year Built	2025
Type	Single Family
Sub-Type	Detached Single Family
Style	2 Storey
Status	Active

Community Information

Address	22 Sydwyck Circle
Area	Spruce Grove
Subdivision	Fenwyck
City	Spruce Grove
County	ALBERTA
Province	AB
Postal Code	T7X 4C9

Amenities

Amenities	Ceiling 9 ft., Closet Organizers, Detectors Smoke, Exterior Walls- 2"x6", Hot Water Tankless, No Animal Home, No Smoking Home, Vinyl Windows
Parking	Triple Garage Attached

Interior

Interior Features	ensuite bathroom
Appliances	Garage Control, Garage Opener, Hood Fan
Heating	Forced Air-1, Natural Gas
Fireplace	Yes
Fireplaces	Remote Control
Stories	2
Has Basement	Yes
Basement	Full, Unfinished

Exterior

Exterior	Wood, Stone, Vinyl
Exterior Features	Backs Onto Park/Trees, Playground Nearby, Public Transportation,

Schools, Shopping Nearby

Roof Asphalt Shingles
Construction Wood, Stone, Vinyl
Foundation Concrete Perimeter

Additional Information

Date Listed October 13th, 2025
Days on Market 2
Zoning Zone 91

DATA IS DEEMED RELIABLE BUT IS NOT GUARANTEED ACCURATE BY THE REALTORS® ASSOCIATION OF EDMONTON. COPYRIGHT 2025 BY THE REALTORS® ASSOCIATION OF EDMONTON. ALL RIGHTS RESERVED. Trademarks are owned or controlled by the Canadian Real Estate Association (CREA) and identify real estate professionals who are members of CREA (REALTOR®, REALTORS®) and/or the quality of services they provide (MLS®, Multiple Listing Service®)

Listing information last updated on October 14th, 2025 at 11:17pm MDT